

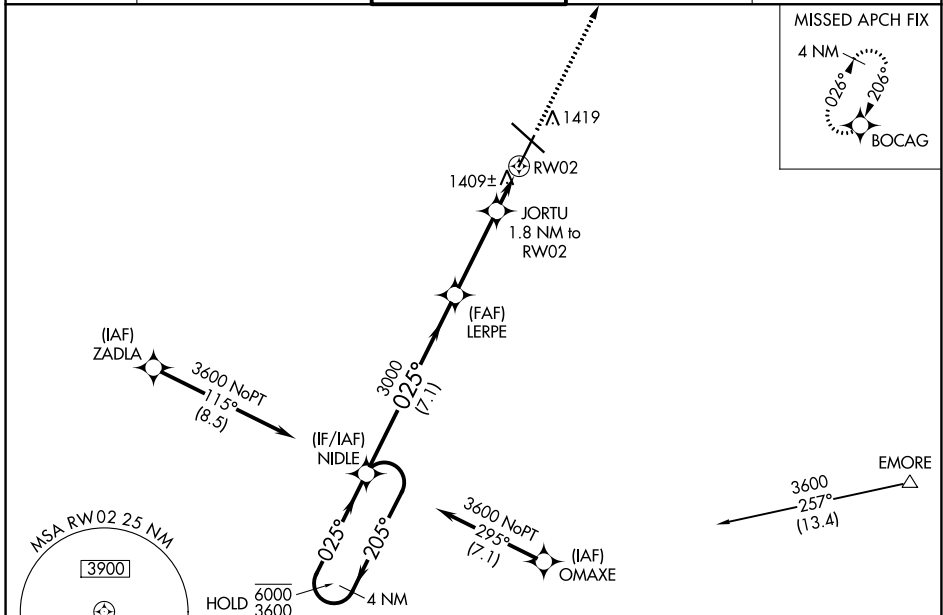
WAAS CH <b>69621</b> <b>W02A</b>	APP CRS <b>025°</b>	Rwy Idg <b>7300</b> TDZE <b>1317</b> Apt Elev <b>1317</b>
--	------------------------	---

# RNAV (GPS) RWY 2

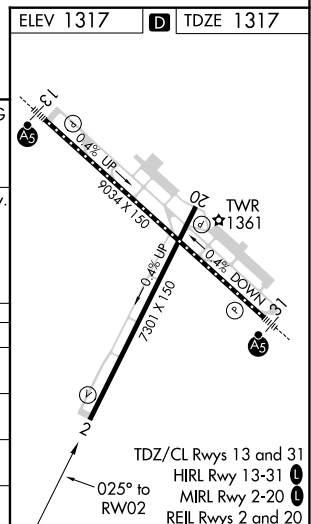
ROCHESTER INTL (RST)

RNP APCH.		MISSED APPROACH: Climb to 3400 direct BOCAG and hold, continue climb-in-hold to 4800.		
ASR For uncompensated Baro-VNAV systems, LNAV/VNAV NA below -28°C or above 54°C.				

ATIS <b>120.5</b>	ROCHESTER APP CON * <b>119.8 251.125</b>	ROCHESTER TOWER * <b>118.3 (CTAF) 257.8</b>	GND CON <b>121.9</b>	UNICOM <b>122.95</b>
----------------------	---	--	-------------------------	-------------------------



4 NM Holding Pattern		NIDLE		LERPE		JORTU 1.8 NM to RW02		3400 BOCAG	
6000 ← 205°		3600 → 025°		3000		*0.9 NM to RW02		*LNAV only.	
GP 3.00°		TCH 47		3000		*1920			
		7.1 NM		3.4 NM		0.9		0.9	
CATEGORY	A	B	C	D					
LPV DA		1567-1	250 (300-1)						
LNAV/VNAV DA		1592-1	275 (300-1)						
LNAV MDA		1660-1	343 (400-1)						
<b>C</b> CIRCLING	1720-1 403 (500-1)	1780-1 463 (500-1)	1900-1½ 583 (600-1½)	1900-2 583 (600-2)					



NC-1, 25 FEB 2021 to 25 MAR 2021

NC-1, 25 FEB 2021 to 25 MAR 2021