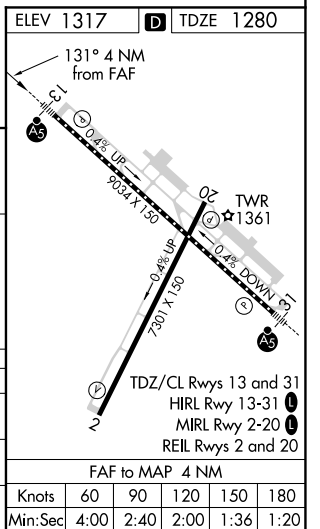
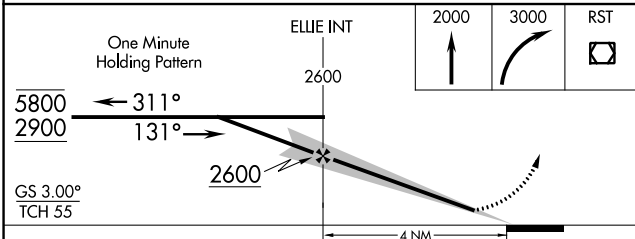
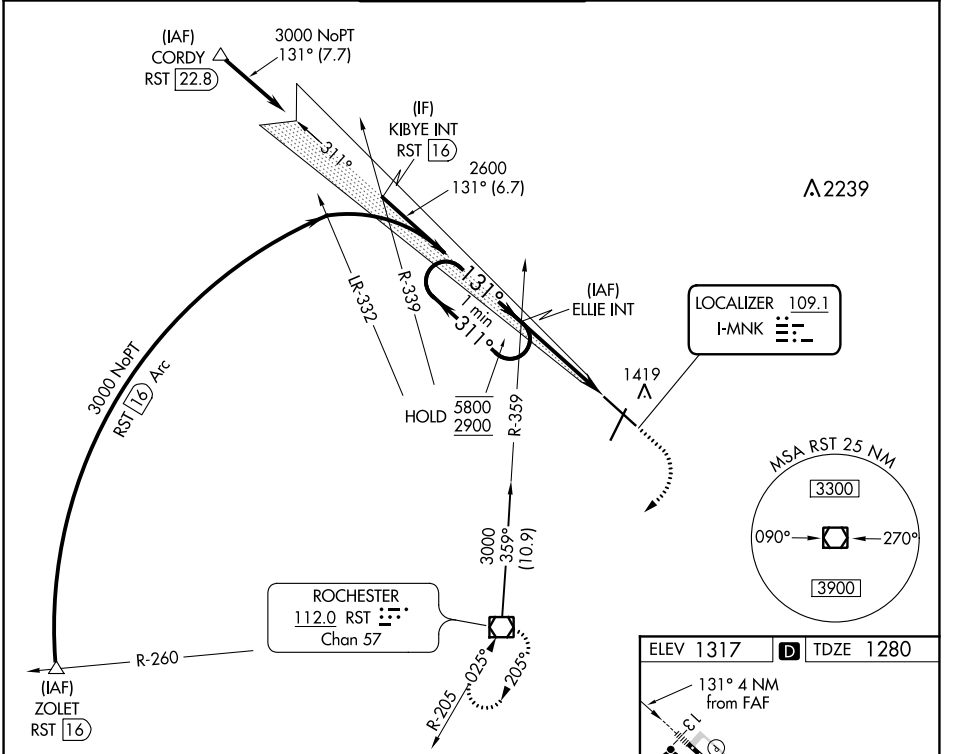


LOC I-MNKG 109.1	APP CRS 131°	Rwy Idg TDZE Apt Elev	9033 1280 1317
----------------------------	------------------------	-----------------------------	---

ILS or LOC RWY 13

ROCHESTER INTL (RST)

 MALS R	MISSED APPROACH: Climb to 2000 then climbing right turn to 3000 direct RST VOR/DME and hold.			
	ATIS 120.5	ROCHESTER APP CON* 119.8 251.125	ROCHESTER TOWER* 118.3(CTAF) 257.8	GND CON 121.9



CATEGORY	A	B	C	D
S-ILS 13	1480/18 200 (200-½)			
S-LOC 13	1680/24	400 (400-½)	1680/35	400 (400-¾)
CIRCLING	1720-1 403 (500-1)	1780-1 463 (500-1)	1900-1½ 583 (600-1½)	1900-2 583 (600-2)

NC-1, 25 FEB 2021 to 25 MAR 2021

NC-1, 25 FEB 2021 to 25 MAR 2021