

WAAS CH 99404 W34A	APP CRS 342°	Rwy Idg TDZE Apt Elev	4401 1060 1060
--	------------------------	-----------------------------	---

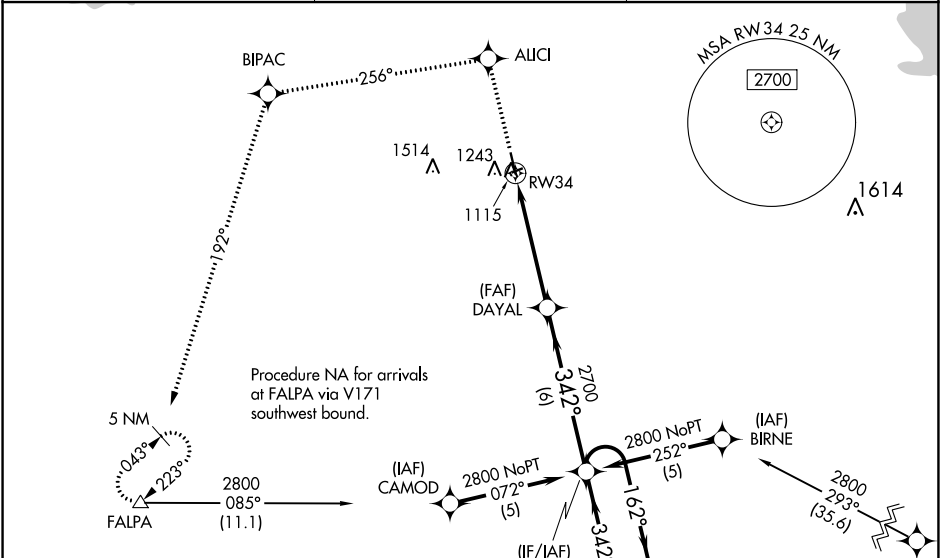
RNAV (GPS) RWY 34

ROSEAU MUNI/RUDY BILLBERG FIELD (R.O.X)

⚠ If local altimeter setting not received, use Warroad altimeter setting and increase all DAs 36 feet/MDAs 40 feet.
⚠ VDP NA when using Warroad altimeter setting.
⚠ Baro-VNAV NA when using Warroad altimeter setting.
 For uncompensated Baro-VNAV systems, LNAV/VNAV NA below -17°C (2°F) or above 46°C (114°F).
 Visibility reduction by helicopters NA. DME/DME RNP-0.3 NA.

MISSED APPROACH: Climb to 2900 direct ALCI and via 256° track to BIPAC and 192° track to FALPA and hold.

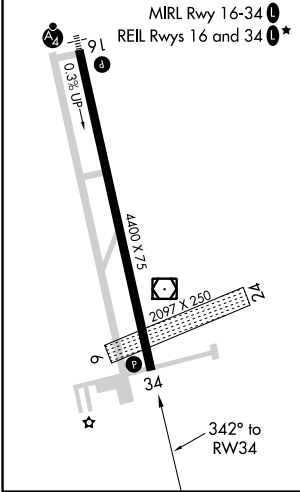
AWOS-3 108.8	MINNEAPOLIS CENTER 134.75 251.1	UNICOM 122.8 (CTAF) 0
------------------------	---	--



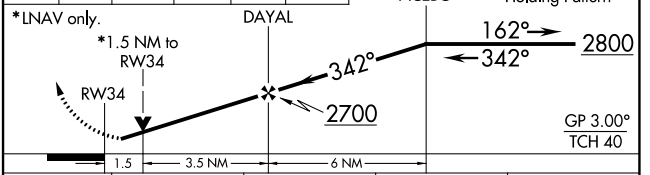
NC-1, 25 FEB 2021 to 25 MAR 2021

NC-1, 25 FEB 2021 to 25 MAR 2021

ELEV 1060	D TDZE 1060
-----------	--------------------



2900	ALCI	256° tr	BIPAC	192° tr	FALPA	VGSI and RNAV glidepath not coincident (VGSI Angle 3.00°/TCH 44).	5 NM Holding Pattern
------	------	---------	-------	---------	-------	---	----------------------



CATEGORY	A	B	C	D
LPV DA	1310-1 250 (300-1)			
LNAV/VNAV DA	1485-1½ 425 (500-1½)			
LNAV MDA	1560-1	500 (500-1)	1560-1¼ 500 (500-1¼)	1560-1½ 500 (500-1½)
CIRCLING	1600-1	540 (600-1)	1600-1½ 540 (600-1½)	1640-2 580 (600-2)