


WAAS CH 56304 W16A	APP CRS 162°	Rwy Idg TDZE Apt Elev	4401 1055 1060
--	------------------------	-----------------------------	---

RNAV (GPS) RWY 16

ROSEAU MUNI/RUDY BILLBERG FIELD (R.O.X)

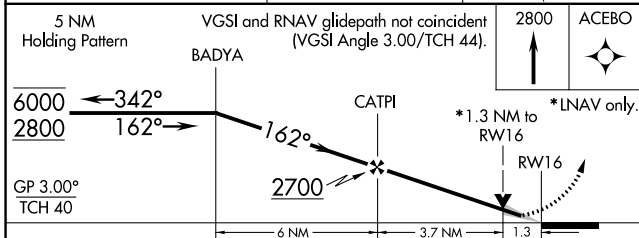
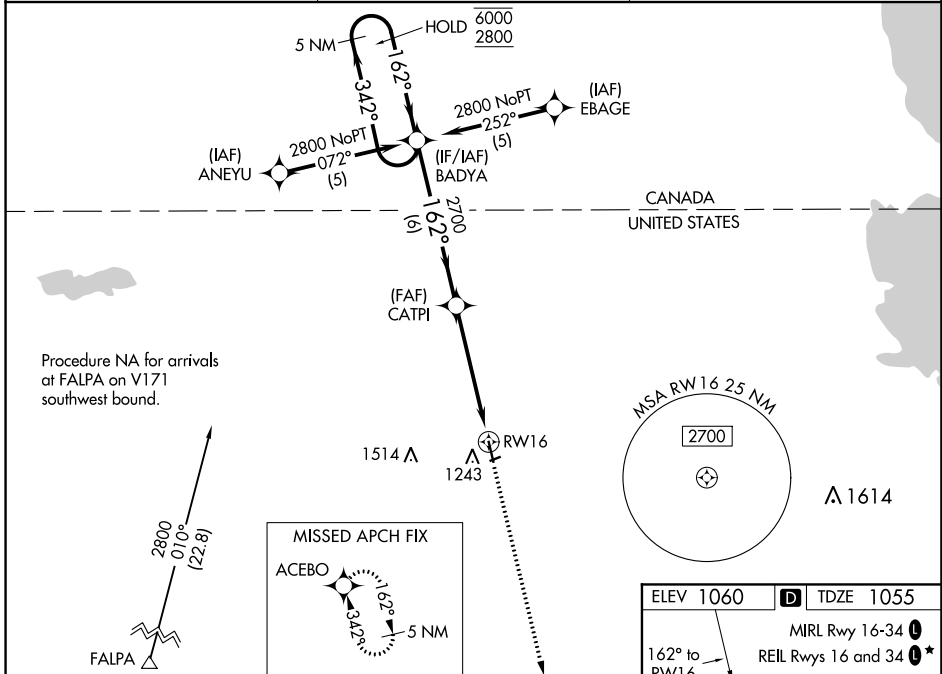
RNP APCH.

▼ Circling NA to Rwy 6 and 24. Baro-VNAV and VDP NA when using Warroad altimeter setting. For uncompensated Baro-VNAV systems, LNAV/VNAV NA below -17°C or above 46°C. When local altimeter setting not received, use Warroad altimeter setting and increase LPV DA to 1341 feet, LNAV/VNAV DA to 1439 feet and all MDA 40 feet, increase LNAV Cat C visibility $\frac{1}{8}$ SM.

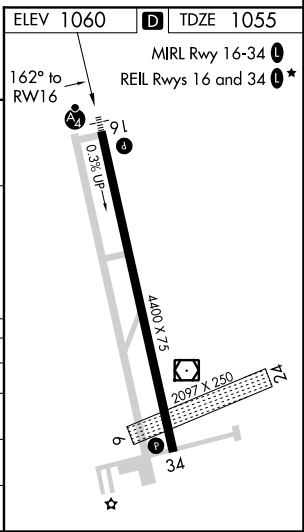
MALSF 

MISSED APPROACH: Climb to 2800 direct ACEBO and hold.

AWOS-3 108.8	MINNEAPOLIS CENTER 134.75 251.1	UNICOM 122.8 (CTAF) 0
------------------------	---	---------------------------------



CATEGORY	A	B	C	D
LPV DA		1305-1	250 (300-1)	
LNAV/VNAV DA		1403-1 $\frac{1}{4}$	348 (400-1 $\frac{1}{4}$)	
LNAV MDA	1500-1	445 (500-1)	1500-1 $\frac{1}{4}$ 445 (500-1 $\frac{1}{4}$)	1500-1 $\frac{1}{2}$ 445 (500-1 $\frac{1}{2}$)
CIRCLING	1600-1	540 (600-1)	1600-1 $\frac{1}{2}$ 540 (600-1 $\frac{1}{2}$)	1640-2 580 (600-2)



NC-1, 25 FEB 2021 to 25 MAR 2021

NC-1, 25 FEB 2021 to 25 MAR 2021