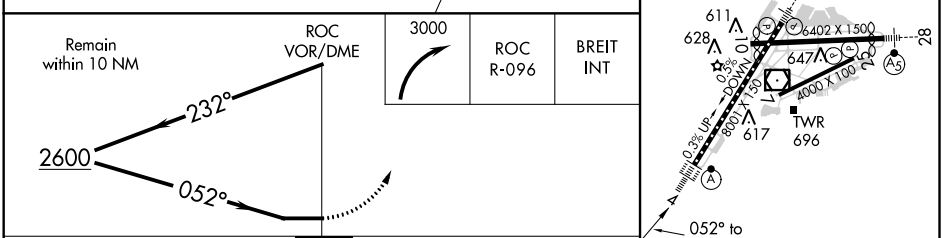
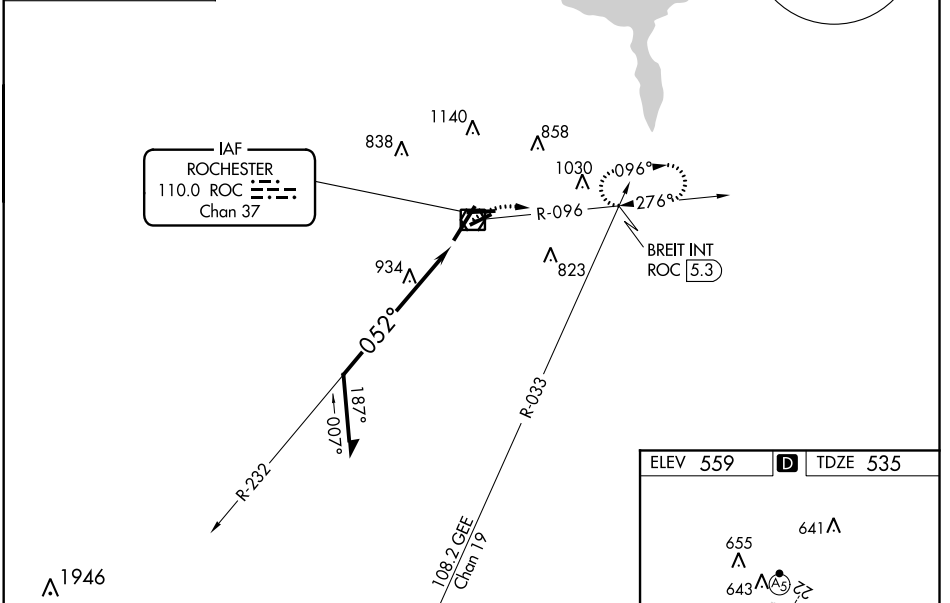


VOR/DME ROC 110.0 Chan 37	APP CRS 052°	Rwy Idg 8001 TDZE 535 Apt Elev 559
---	------------------------	---

FREDERICK DOUGLASS-GREATER ROCHESTER INTL (ROC) **VOR RWY 4**

▽ ▲	For inop ALSF-2, increase S-4 Cat A visibility to RVR 5000, increase Cats C/D visibility to 2. Helicopter visibility reduction below RVR 4000 NA.	ALSF-2 	MISSED APPROACH: Climbing right turn to 3000 on ROC VOR/DME R-096 to BREIT INT/ROC 5.3 DME and hold, continue climb-in-hold to 3000.
----------------------	---	------------	--

ATIS 124.825	ROCHESTER APP CON 119.55 269.6	ROCHESTER TOWER 118.3 254.3	GND CON 121.7	CLNC DEL 118.8 343.65
------------------------	--	---------------------------------------	-------------------------	---------------------------------



CATEGORY	A	B	C	D
	S-4	1280/40 745 (800-¾)	1280-1¾ 745 (800-1¾)	
☐ CIRCLING	1280-1 721 (800-1)	1280-1¼ 721 (800-1¼)	1500-2¾ 941 (1000-2¾)	1500-3 941 (1000-3)

TDZ/CL Rwy 4
REIL Rwys 7, 10 and 25
MIRL Rwy 7-25
HIRL Rwys 10-28 and 4-22

NE-2, 25 FEB 2021 to 25 MAR 2021

NE-2, 25 FEB 2021 to 25 MAR 2021