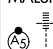


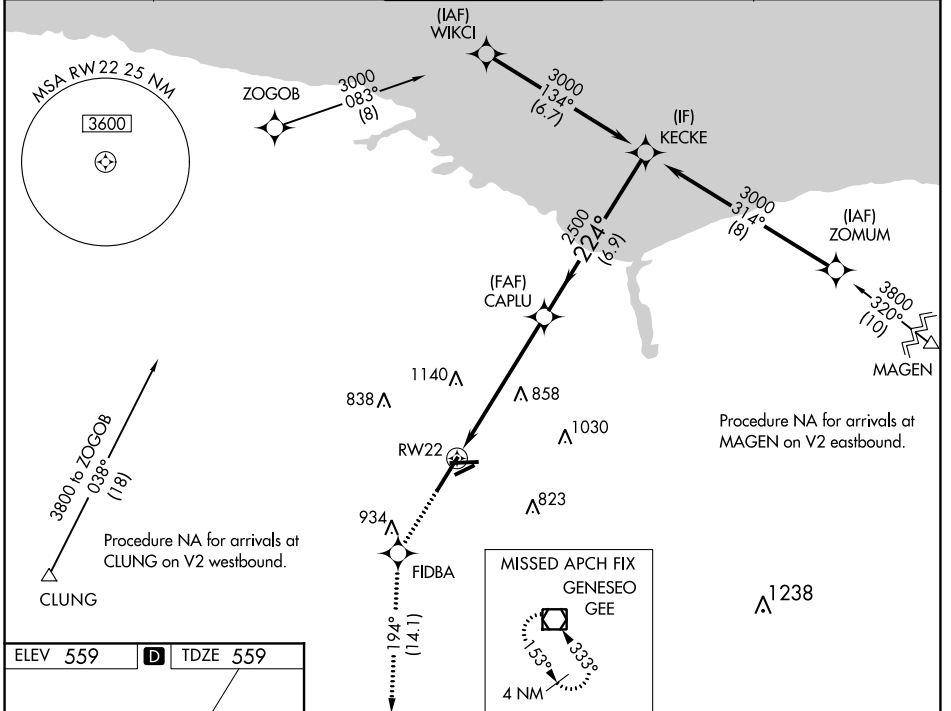
WAAS CH <b>73016</b> <b>W22A</b>	APP CRS <b>224°</b>	Rwy Idg TDZE Apt Elev	<b>8001</b> <b>559</b> <b>559</b>
--	------------------------	-----------------------------	---

# RNAV (GPS) RWY 22

FREDERICK DOUGLASS-GREATER ROCHESTER INTL (ROC)

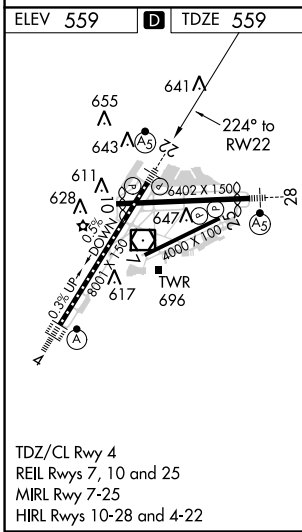
<p><b>▼</b> For uncompensated Baro-VNAV systems, LNAV/VNAV NA below -18°C (0°F) or above 54°C (130°F). DME/DME RNP-0,3 NA.  <b>▲</b> **RVR 1800 authorized with use of FD or AP or HUD to DA.</p>	<p>MALSR  </p>	<p>MISSED APPROACH: Climb to 4000 direct FIDBA and on track 194° to GEE VOR/DME and hold.</p>
---	---	---


ATIS <b>124.825</b>	ROCHESTER APP CON <b>119.55 269.6</b>	ROCHESTER TOWER <b>118.3 254.3</b>	GND CON <b>121.7</b>	CLNC DEL <b>118.8 343.65</b>
------------------------	--	---------------------------------------	-------------------------	---------------------------------



NE-2, 25 FEB 2021 to 25 MAR 2021

NE-2, 25 FEB 2021 to 25 MAR 2021



ELEV 559	<b>D</b>	TDZE 559		
4000	FIDBA	GEE		
↑		tr 194°		
*LNAV only.				
RWY 22	*1.2 NM to RWY 22	2500		
1.2 NM	4.7 NM	6.9 NM		
CATEGORY	A	B	C	D
LPV DA	**759/24 200 (200-½)			
LNAV/VNAV DA	859/25 300 (300-½)			
LNAV MDA	980/24	421 (500-½)	980/40	421 (500-¾)
<b>C</b> CIRCLING	1060-1	501 (600-1)	1500-2¾ 941 (1000-2¾)	1500-3 941 (1000-3)