

WAGGE SIX DEPARTURE

AL-346 (FAA)

RENO/TAHOE INTL (RNO)

RENO, NEVADA

D-ATIS
 135.8 363.0
 CLNC DEL
 124.9 370.85
 CPDLC
 GND CON
 121.9 348.6
 RENO TOWER
 118.7 257.8
 NORCAL DEP CON
 119.2 279.55

**TOP ALTITUDE:
 FL190**

LOVELOCK
 116.5 LLC
 Chan 112
 N40°07.52'-W118°34.66'
 L-9-11, H-3

MUSTANG
 117.9 FMG
 Chan 126
 N39°31.88'-W119°39.36'
 L-9, H-3

MINIMUM CROSSING
 ALTITUDES AT FMG
 FOR MUSTANG TRANSITION

V28-113 South: 10500
 V6 Southwest: 12000
 V165 South: 10000

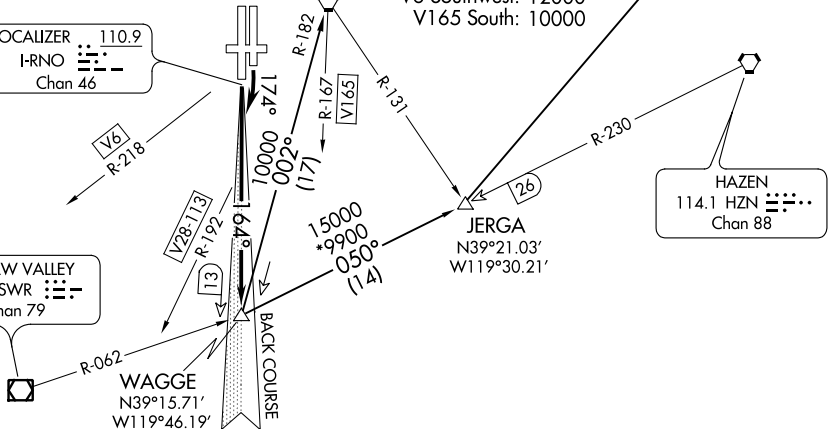
LOCALIZER 110.9
 I-RNO
 Chan 46

SQUAW VALLEY
 113.2 SWR
 Chan 79

HAZEN
 114.1 HZN
 Chan 88

JERGA
 N39°21.03'
 W119°30.21'

WAGGE
 N39°15.71'
 W119°46.19'



TAKEOFF MINIMUMS

Rwys 7, 25, 34L/R: NA- ATC.

Rwy 16R: Standard with minimum climb of 370' per NM to 9200.

Rwy 16L: Standard with minimum climb of 740' per NM to 8000.

NOTE: Chart not to scale.

DEPARTURE ROUTE DESCRIPTION

TAKEOFF RUNWAY 16R: Climb on I-RNO south course to WAGGE INT, thence via (transition) or assigned route.

TAKEOFF RUNWAY 16L: Climbing right turn heading 174° to intercept I-RNO south course to WAGGE INT, thence via (transition) or assigned route.

All aircraft maintain FL190 or assigned altitude. Expect clearance to requested altitude 5 minutes after departure.

LOVELOCK TRANSITION (WAGGE6.LLC): From over WAGGE INT via HZN R-230 to JERGA INT then via LLC R-206 to LLC VORTAC.

MUSTANG TRANSITION (WAGGE6.FMG): From over WAGGE INT via FMG R-182 to FMG VORTAC.

WAGGE SIX DEPARTURE

(WAGGE6.WAGGE) 04FEB16

RENO, NEVADA
 RENO/TAHOE INTL (RNO)

SW-4, 25 FEB 2021 to 25 MAR 2021

SW-4, 25 FEB 2021 to 25 MAR 2021