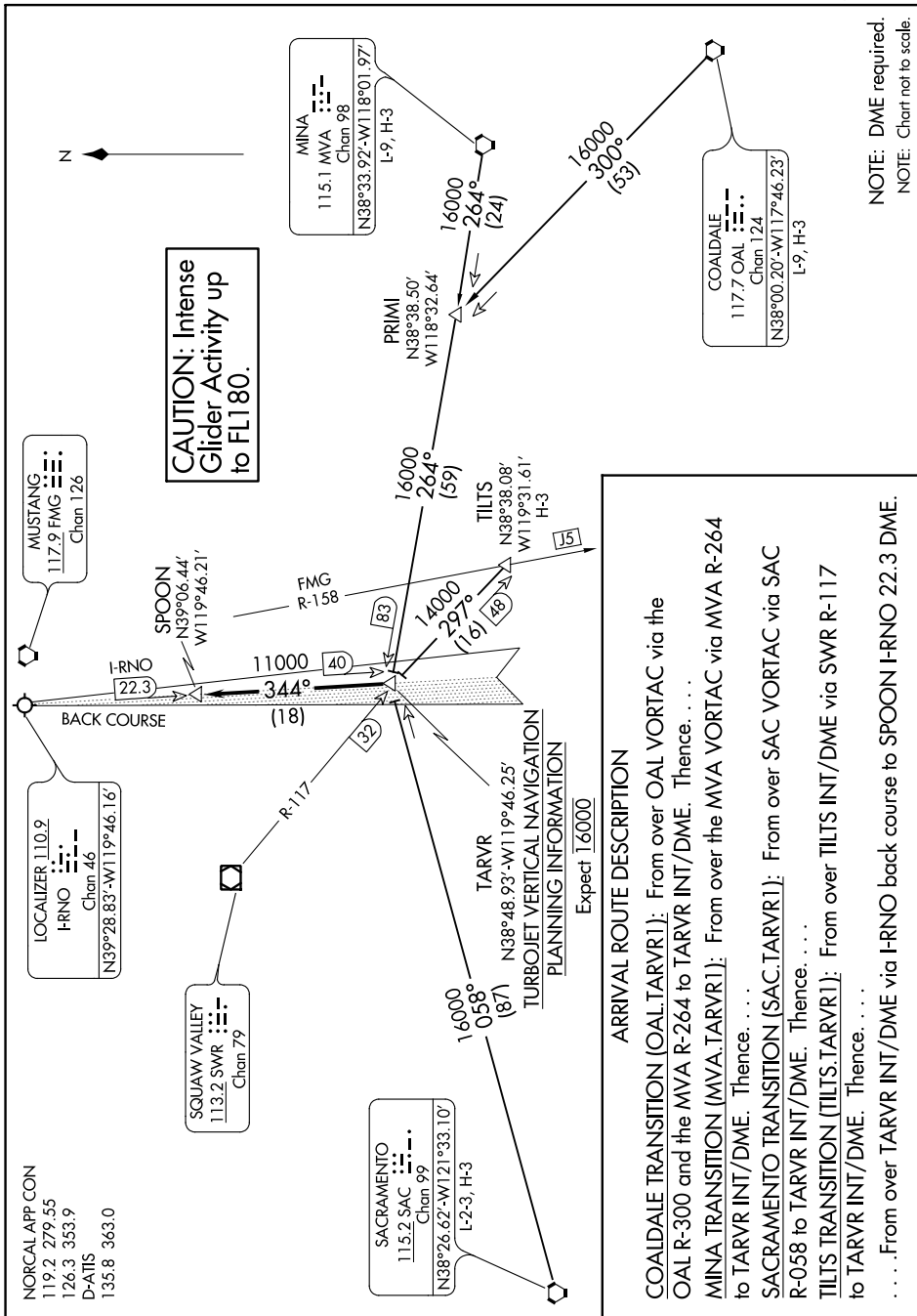


SW-4, 25 FEB 2021 to 25 MAR 2021



ARRIVAL ROUTE DESCRIPTION

COALDALE TRANSITION (OAL.TARVR1): From over OAL VORTAC via the OAL R-300 and the MVA R-264 to TARVR INT/DME. Thence, . . .

MINA TRANSITION (MVA.TARVR1): From over the MVA VORTAC via MVA R-264 to TARVR INT/DME. Thence, . . .

SACRAMENTO TRANSITION (SAC.TARVR1): From over SAC VORTAC via SAC R-058 to TARVR INT/DME. Thence, . . .

TILTS TRANSITION (TILTS.TARVR1): From over TILTS INT/DME via SWR R-117 to TARVR INT/DME. Thence, . . .

. . . From over TARVR INT/DME via I-RNO back course to SPOON I-RNO 22.3 DME.

NOTE: DME required.
NOTE: Chart not to scale.

SW-4, 25 FEB 2021 to 25 MAR 2021