


RNAV (RNP) Z RWY 34L

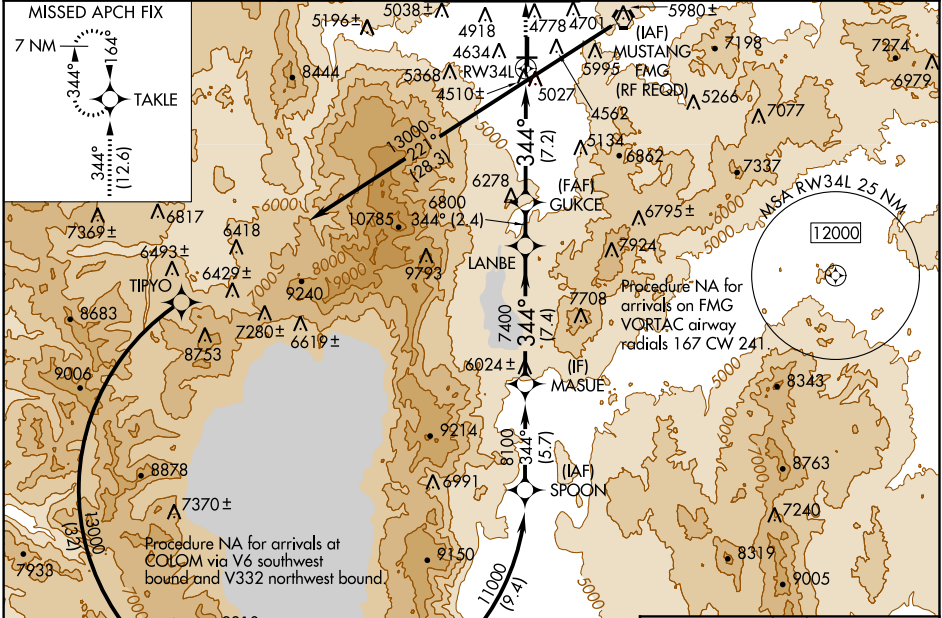
RENO/TAHOE INTL (RNO)


| | | |
|-------------|----------|--------------|
| APP CRS | Rwy Idg | 10011 |
| 344° | TDZE | 4410 |
| | Apt Elev | 4415 |

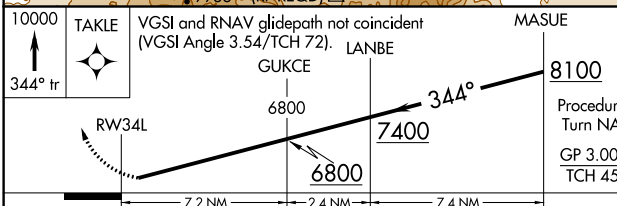
GPS required. For uncompensated Baro-VNAV systems, procedure NA below -13°C (8°F) or above 40°C (104°F). For inoperative MALSR increase visibility RNP 0.12 to 1¼ mile and RNP 0.30 to 4 miles.
 *Missed approach requires minimum climb of 243 feet per NM to 7200.

MALSR

MISSED APPROACH: Climb to 10000 via 344° track to TAKLE and hold, continue climb-in-hold to 10000.

| | | | | | |
|--------------------|---------------------------------|--------------------|--------------------|---------------------|-------|
| D-ATIS | NORCAL APP CON | RENO TOWER | GND CON | CLNC DEL | CPDLC |
| 135.8 363.0 | 119.2 279.55 126.3 353.9 | 118.7 257.8 | 121.9 348.6 | 124.9 370.85 | |



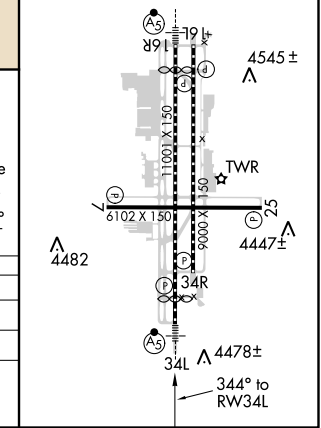
| | | | |
|------------|---|--|-------|
| ELEV 10000 | TAKLE | VGSI and RNAV glidepath not coincident (VGSI Angle 3.54/TCH 72). | MASUE |
| 344° tr |  | | |



| | | | | |
|--------------|-----------------------|---|---|---|
| CATEGORY | A | B | C | D |
| RNP 0.12 DA* | 4771-1 361 (400-1) | | | |
| RNP 0.30 DA | 5342-2¾ 932 (1000-2¾) | | | |

AUTHORIZATION REQUIRED

| | | |
|--------------------------------|----------|-----------|
| ELEV 4415 | D | TDZE 4410 |
| HIRL Rwy 1 6R-34L and 1 6L-34R | | |
| REIL Rwy 7, 16L, 25, and 34R | | |
| MIRL Rwy 7-25 | | |
| A 4474± | | |



SW-4, 25 FEB 2021 to 25 MAR 2021

SW-4, 25 FEB 2021 to 25 MAR 2021