

LOC/DME I-AGY	APP CRS	Rwy Idg	10011
109.9	344°	TDZE	4410
Chan 36		Apt Elev	4415

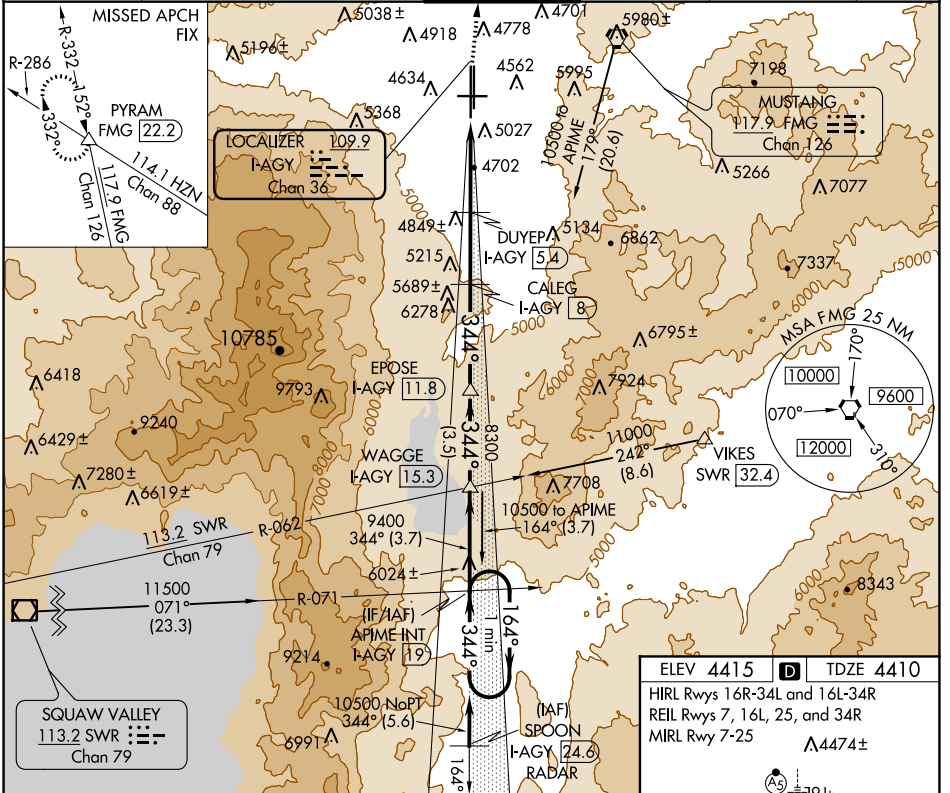
ILS or LOC/DME RWY 34L

RENO/TAHOE INTL (RNO)

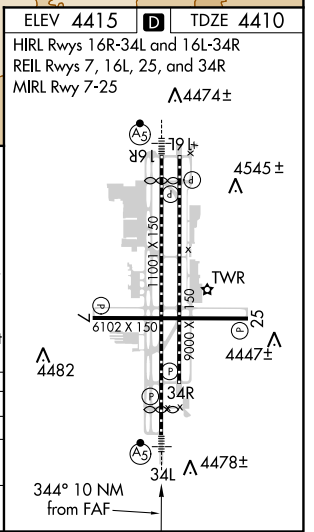
⚠ Inoperative table does not apply.
 If local altimeter setting not received, procedure NA.
 Circling Rwy 7 NA at night.

⚠ MISLSR MISSED APPROACH: Climb to 11000 via heading 350° and FMG VORTAC R-332 to PYRAM INT/FMG 22.2 DME and hold, continue climb-in-hold to 11000.

D-ATIS	NORCAL APP CON	RENO TOWER	GND CON	CLNC DEL	CPDLC
135.8 363.0	119.2 279.55 126.3 353.9	118.7 257.8	121.9 348.6	124.9 370.85	



11000 ↑ hdg 350°	FMG R-332	PYRAM	WAGGE I-AGY [15.3]		APIME INT I-AGY [19]	One Minute Holding Pattern
DUYEP I-AGY [5.4]		CALEG I-AGY [8]	EPOSE I-AGY [11.8]		164° → 10500	
I-AGY [3.8]		I-AGY [1.8]	8300		← 344°	
5800		9400		GS 3.54° TCH 45		
2 NM		1.6	2.6	3.8 NM	3.5 NM	3.7 NM
CATEGORY	A	B	C	D		
S-ILS 34L	4946-1½ 536 (600-1½)			NA		
S-LOC 34L	5120-1	710 (800-1)	5120-2	710 (800-2)	NA	
CIRCLING	5340-1¼	925 (1000-1¼)	5340-2¾	925 (1000-2¾)	NA	



SW-4, 25 FEB 2021 to 25 MAR 2021

SW-4, 25 FEB 2021 to 25 MAR 2021