

(HARTT.HARTT1) 17173

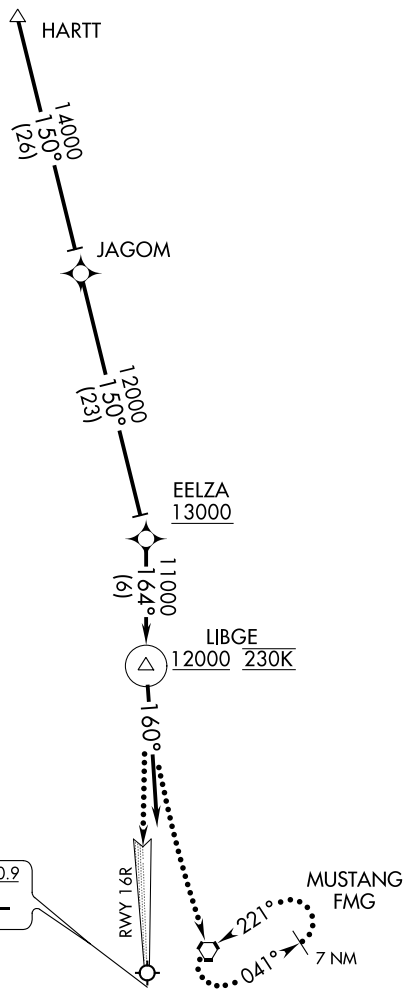
HARTT ONE ARRIVAL (RNAV)

AL-346 (FAA)

RENO/TAHOE INTL (RNO)
RENO, NEVADA

D-ATIS
135.8 363.0
RENO TOWER
118.7 257.8
NORCAL APP CON
119.2 279.55
126.3 353.9

**CAUTION: Intense
Glider Activity
to FL180.**



LOCALIZER 110.9
I-RNO
Chan 46

NOTE: GPS required.
NOTE: RNAV 1.
NOTE: Cross EELZA at or above 13000.
NOTE: Cross LIBGE at or above 12000 at 230 KTS.

NOTE: Chart not to scale.

ARRIVAL ROUTE DESCRIPTION

From HARTT on track 150° to JAGOM, then on track 150° to cross EELZA at or above 13000, then on track 164° to cross LIBGE at or above 12000 at 230 KTS. Then on heading 160° expect ILS RWY 16R or RADAR vectors.

LOST COMMUNICATIONS

At LIBGE, proceed inbound via RWY 16R ILS approach. If unable, climbing left turn to 12000 direct FMG VORTAC and hold.

HARTT ONE ARRIVAL (RNAV)
(HARTT.HARTT1) 25AUG11

RENO, NEVADA
RENO/TAHOE INTL (RNO)

SW-4, 25 FEB 2021 to 25 MAR 2021

SW-4, 25 FEB 2021 to 25 MAR 2021