

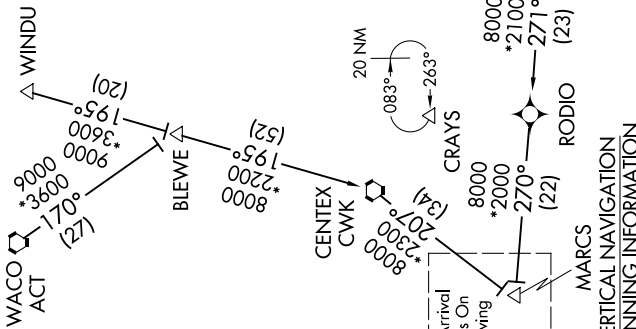
BRAUN THREE ARRIVAL (RNAV) Transition Routes

SAN ANTONIO, TEXAS

SC-3, 25 FEB 2021 to 25 MAR 2021

- HUMBLE TRANSITION (IAH.BRAUN3)
- LUFKIN TRANSITION (LFK.BRAUN3)
- MOLLR TRANSITION (MOLLR.BRAUN3)
- WACO TRANSITION (ACT.BRAUN3)
- WALLIN TRANSITION (WALLIN.BRAUN3)
- WINDU TRANSITION (WINDU.BRAUN3)

SAN ANTONIO APP CON  
127.1 269.1  
KRND ATIS \*  
290.525  
SAT D-ATIS  
118.9  
SKF ATIS  
120.45 273.5  
SSF ATIS  
128.8



NOTE: RADAR required.  
NOTE: RNAV 1.  
NOTE: DME/DME/IRU or GPS required.  
NOTE: WALLIN transition for Houston Terminal Area Departures only.

See Arrival Routes On Following Page  
MARC'S VERTICAL NAVIGATION PLANNING INFORMATION  
Turbojets: Expect 13000

(CONTINUED ON FOLLOWING PAGE)

Turbojets: Expect 13000

NOTE: Chart not to scale

SC-3, 25 FEB 2021 to 25 MAR 2021

BRAUN THREE ARRIVAL (RNAV) Transition Routes

SAN ANTONIO, TEXAS