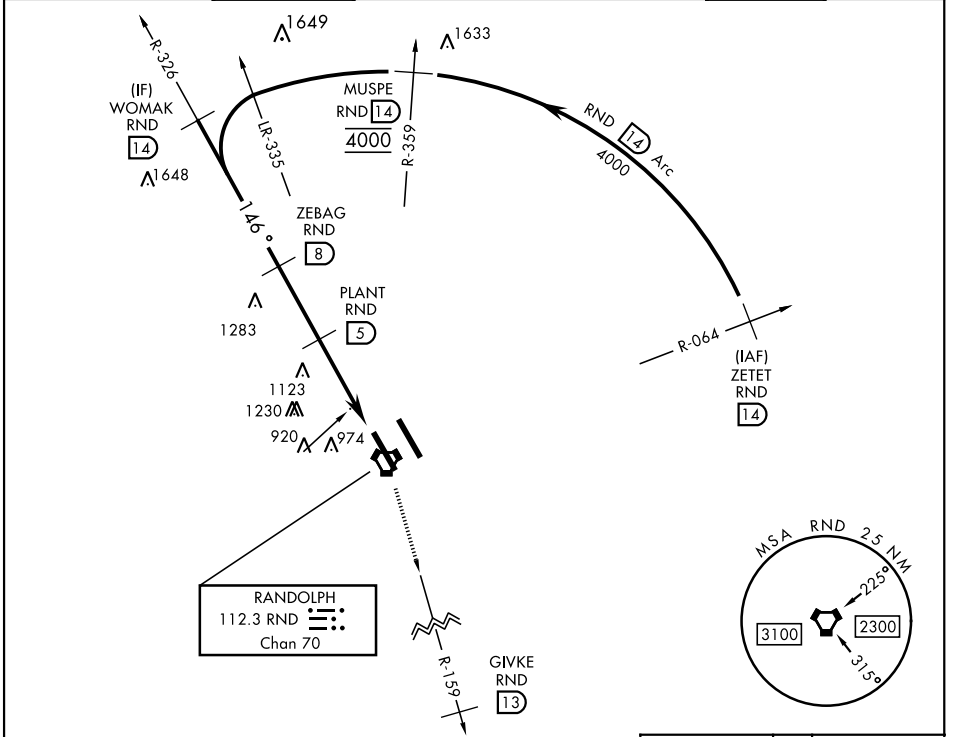


UNIVERSAL CITY, TEXAS

TACAN RWY 15R

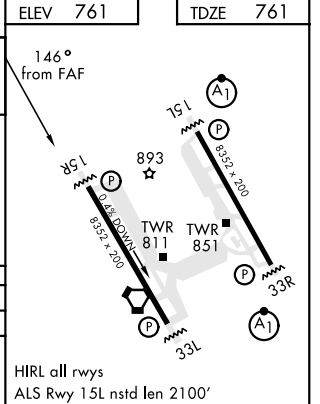
VORTAC RND 112.3 Chan 70	APCH CRS 146°	Rwy Idg TDZE 8352 761 Arprt Elev 761	AL-341 [USAF]	RANDOLPH AFB (KRND)
----------------------------------------------	-------------------------	--------------------------------------------------------------------	---------------	---------------------

RADAR required.		MISSED APPROACH: Climb to 3000 out RND VORTAC R-159 to 13 DME (GIVKE). Expect ATC instructions.					
*Circling not authorized NE of Rwy 15R-33L.							
ATIS ★ 290.525	SAN ANTONIO APP CON 128.05 318.1	RANDOLPH TOWER ★ 128.25 294.7	RANDOLPH GND CON 119.65 275.8	CLNC DEL (RWY 15L-33R) 338.35	HANGOVER ATIS ★ 327.8	HANGOVER TOWER ★ 120.5 291.1	HANGOVER GND CON 124.75 353.75



EMERG SAFE ALT 100 NM 4100

	ELEV 761	TDZE 761			
	3000 RND R-159	GIVKE RND (13)			
	146° from FAF				
	WOMAK (14) 4000	ZEBAG (8) 3000			
	PLANT (5) 2100	HUNOR (1.5) 2100			
	VORTAC				
	3.07° TCH 46				
	3.5 NM	0.5			
CATEGORY	A	B	C	D	E
S-15R	1380/55	619 (700-1)	1380-1 3/4	619	(700-1 3/4)
CIRCLING*	1380-1	619 (700-1)	1500-2 739 (800-2)	1800-3	1039 (1100-3)



HIRL all rwys
ALS Rwy 15L nstd len 2100'

UNIVERSAL CITY, TEXAS
Amdt 1 28JAN21

29°32'N-98°17'W

RANDOLPH AFB (KRND)

TACAN RWY 15R

SC-3, 25 FEB 2021 to 25 MAR 2021

SC-3, 25 FEB 2021 to 25 MAR 2021