

# ILS or LOC Y RWY 33R

LOC I-RND <b>109.3</b>	APCH CRS <b>325°</b>	Rwy Idg TDZE Arpt Elev <b>8352</b> <b>733</b> <b>761</b>	AL-341 [USAF]	RANDOLPH AFB (KRND)
---------------------------	-------------------------	---	---------------	---------------------

RADAR or DME required.

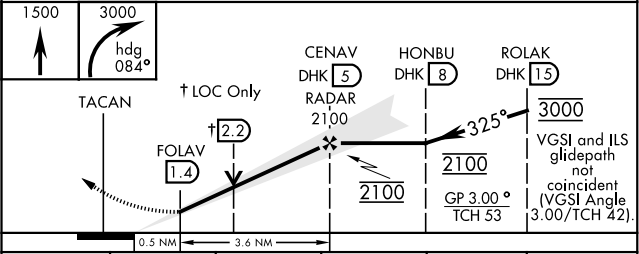
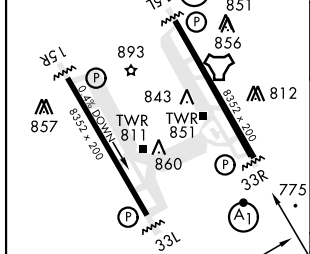
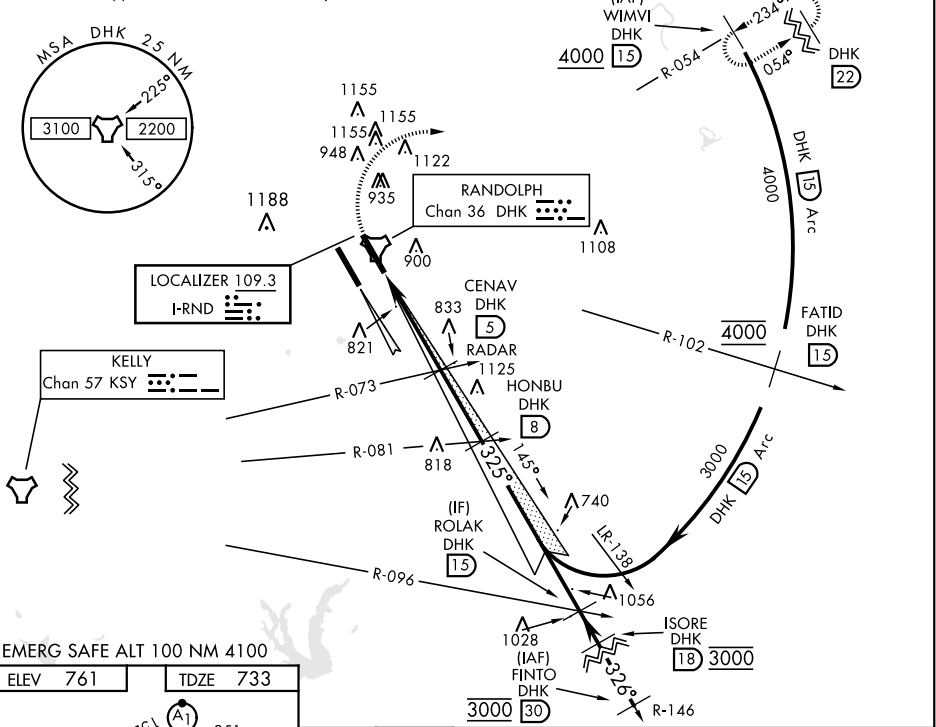
ALSIF-1

MISSED APPROACH: Climb to 1500, then climbing right turn hdg 084° to 3000. Intercept DHK R-054 to WIMVI and hold.

\* When ALS inop, increase RVR to 40 and vis to ¼ mile.  
 \*\* When ALS inop, increase CAT AB RVR to 55, vis to 1 mile; CAT CDE vis to 1½ miles.  
 \*\*\* Circling not authorized SW of Rwy 15L-33R.

ATIS ★ <b>290.525</b>	SAN ANTONIO APP CON <b>128.05 318.1</b>	RANDOLPH TOWER ★ <b>128.25 294.7</b>	RANDOLPH GND CON <b>119.65 275.8</b>	CLNC DEL (RWY 15L-33R) <b>338.35</b>	HANGOVER ATIS ★ <b>327.8</b>	HANGOVER TOWER ★ <b>120.5 291.1</b>	HANGOVER GND CON <b>124.75 353.75</b>
--------------------------	--	---	---	---	---------------------------------	--	--

Simultaneous approaches authorized with Rwy 33R and 33L.



CATEGORY	A	B	C	D	E
S-ILS 33R *	933/24		200	(200-½)	
S-LOC 33R **	1180/24	447 (500-½)	1180/45	447 (500-¾)	
<b>CIRCLING</b> ***	1180-1 419 (500-1)	1220-1 459 (500-1)	1260-1½ 499 (500-1½)	1800-3 1039 (1100-3)	

# ILS or LOC Y RWY 33R

SC-3, 25 FEB 2021 to 25 MAR 2021

SC-3, 25 FEB 2021 to 25 MAR 2021