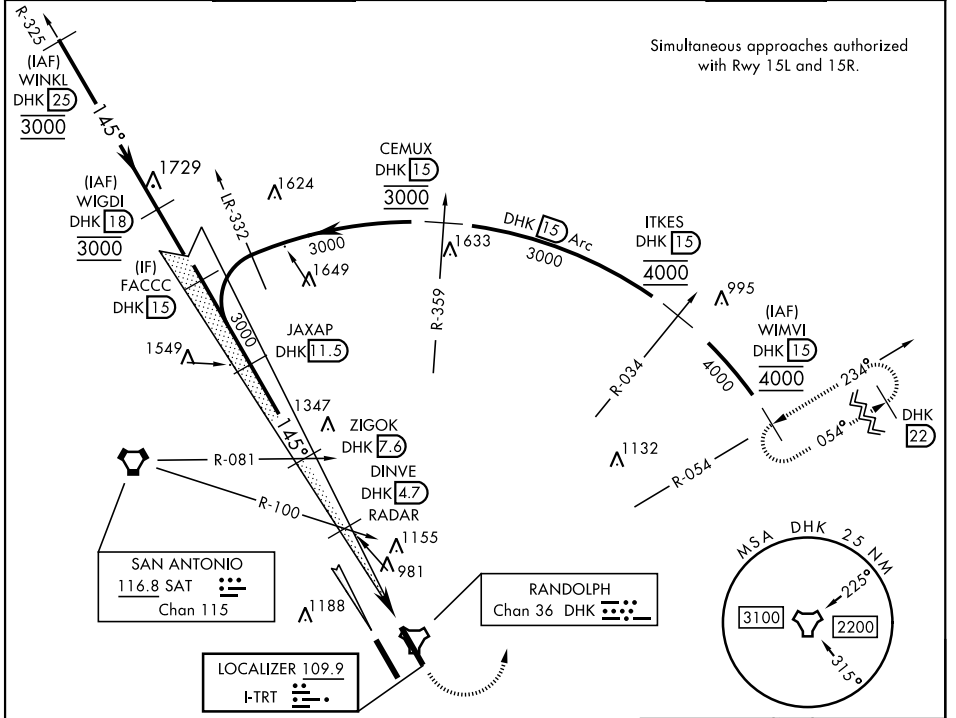


# ILS or LOC Y RWY 15L

LOC I-TRT <b>109.9</b>	APCH CRS <b>145°</b>	Rwy Ldg TDZE <b>8352</b> <b>742</b> Arprt Elev <b>761</b>	AL-341 [USAF]	RANDOLPH AFB (KRND)
---------------------------	-------------------------	---	---------------	---------------------

RADAR or DME required.		ALS-F1 			MISSED APPROACH: Climb to 1500, then climbing left turn heading 024° to 3000. Intercept DHK TACAN R-054 to WIMVI and hold.		
* When ALS inop, increase CAT AB RVR to 55, vis to 1 mile; CAT CDE to 1 3/8 miles.							
** Circling not authorized SW of Rwy 15L-33R.							
ATIS ★	SAN ANTONIO APP CON	RANDOLPH TOWER ★	RANDOLPH GND CON	CLNC DEL (RWY 15L-33R)	HANGOVER ATIS ★	HANGOVER TOWER ★	HANGOVER GND CON
<b>290.525</b>	<b>128.05 318.1</b>	<b>128.25 294.7</b>	<b>119.65 275.8</b>	<b>338.35</b>	<b>327.8</b>	<b>120.5 291.1</b>	<b>124.75 353.75</b>

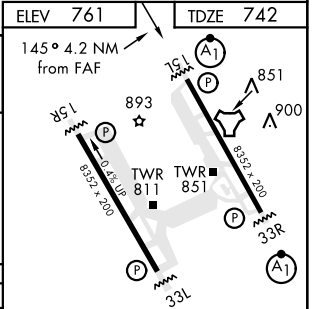


Simultaneous approaches authorized with Rwy 15L and 15R.

SC-3, 25 FEB 2021 to 25 MAR 2021

SC-3, 25 FEB 2021 to 25 MAR 2021

EMERG SAFE ALT 100 NM 4100					ELEV 761	TDZE 742
VGS1 and ILS glidepath not coincident (VGS1 Angle 3.00/TCH 46).					1500	3000
FACCC (DHK 15) JAXAP (DHK 11.5) ZIGOK (DHK 7.6) DINVE (DHK 4.7) RADAR					hdg 024°	DHK R-054
GS 3.00° TCH 41					↑ LOC only	WIMVI DHK 15
2100					↑ 1.9	JEPGA (1) TACAN
3.7 NM					0.5 NM	
CATEGORY	A	B	C	D	E	
S-ILS 15L	942/40		200	(200-34)		
S-LOC 15L *	1240/40	498 (500-3/4)	1240/60	498	(500-1 1/2)	
CIRCLING **	1240-1	479 (500-1)	1260-1 1/2 499 (500-1 1/2)	1800-3	1039 (1100-3)	
HIRL all rwys ALS Rwy 15L nstd len 2100'						
FAF to MAP 3.7 NM						
Knots	60	90	120	150	180	
Min:Sec	3:42	2:28	1:51	1:29	1:14	



# ILS or LOC Y RWY 15L