

# ILS or LOC RWY 33L

LOC I-VQE <b>111.1</b>	APCH CRS <b>325°</b>	Rwy Ldg TDZE <b>8352</b> <b>734</b> Arprt Elev <b>761</b>
---------------------------	-------------------------	---

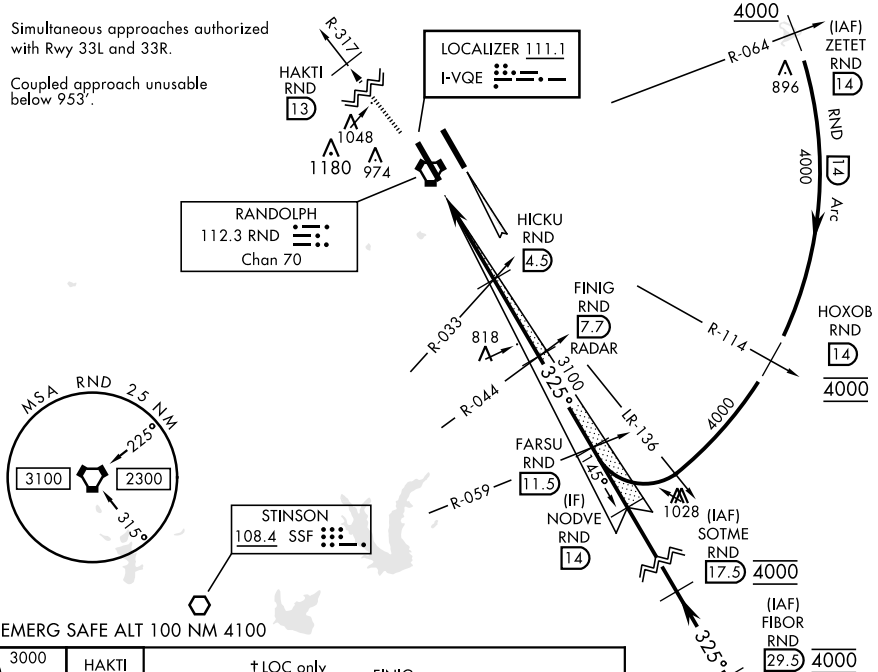
AL-341 [USAF]

RANDOLPH AFB (KRND)

RADAR or DME required.		MISSED APPROACH: Climb to 3000 out RND VORTAC R-317 to 13 DME (HAKTI). Expect ATC instructions.					
* Circling not authorized NE of Rwy 15R-33L.							
ATIS ★	SAN ANTONIO APP CON	RANDOLPH TOWER ★	RANDOLPH GND CON	CLNC DEL (RWY 15L-33R)	HANGOVER ATIS ★	HANGOVER TOWER ★	HANGOVER GND CON
<b>290.525</b>	<b>128.05 318.1</b>	<b>128.25 294.7</b>	<b>119.65 275.8</b>	<b>338.35</b>	<b>327.8</b>	<b>120.5 291.1</b>	<b>124.75 353.75</b>

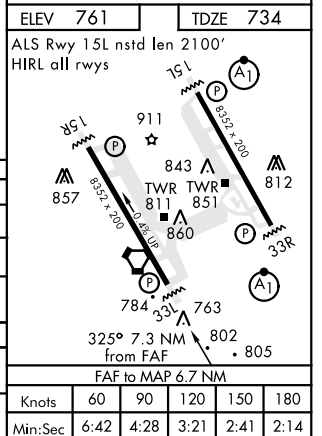
Simultaneous approaches authorized with Rwy 33L and 33R.

Coupled approach unusable below 953'.



EMERG SAFE ALT 100 NM 4100

↑	3000 RND R-317	HAKTI RND 13	† LOC only		FINIG 7.7	FARSU 11.5	NODVE 14
	VORTAC		WAPOP 1	† HICKU 4.5	RADAR	3100	325° 4000
↑		† 2100		3100	3100	GS 3.00° TCH 47	4000
0.6 NM		3.5 NM		3.1 NM			
CATEGORY	A	B	C	D	E		
S-ILS 33L	933/40		200	(200-¾)			
S-LOC 33L	1080/55		347	(400-1)			
CIRCLING*	1220-1 459 (500-1)	1280-1 519 (600-1)	1500-2 739 (800-2)	1800-3	1039	(1100-3)	
WITHOUT LAST STEP DOWN FIX							
S-LOC 33L	1140/55	407 (400-1)	1140/60	407	(400-1½)		
CIRCLING*	1220-1 459 (500-1)	1280-1 519 (600-1)	1500-2 739 (800-2)	1800-3	1039	(1100-3)	



# ILS or LOC RWY 33L

SC-3, 25 FEB 2021 to 25 MAR 2021

SC-3, 25 FEB 2021 to 25 MAR 2021