

HI-TACAN A

TACAN DHK Chan 36	APCH CRS 144°	Rwy Idg TDZE Arprt Elev N/A N/A 761
--------------------------	----------------------	--

AL-341 [USAF]

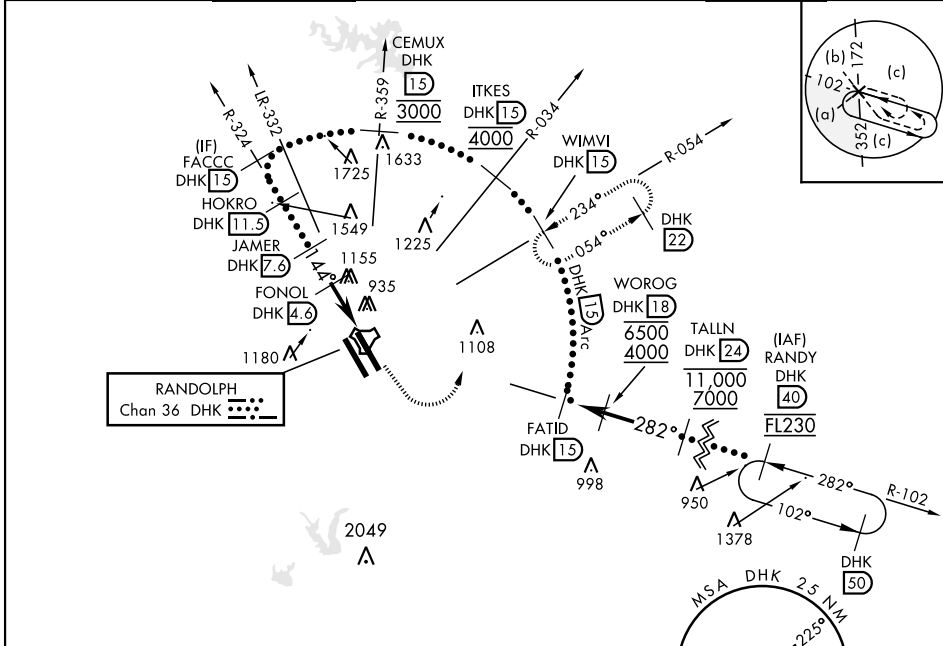
RANDOLPH AFB (KRND)

RADAR required for missed approach monitoring.

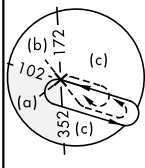
MISSED APPROACH: Track heading 145° to 1500. Then climbing left turn heading 024° to 3000. Intercept DHK TACAN R-054 to WIMWI and hold.

* Circling not authorized SW of Rwy 15L-33R.

ATIS ★ 290.525	SAN ANTONIO APP CON 128.05 318.1	RANDOLPH TOWER ★ 128.25 294.7	RANDOLPH GND CON 119.65 275.8	CLNC DEL (RWY 15L-33R) 338.35	HANGOVER ATIS ★ 327.8	HANGOVER TOWER ★ 120.5 291.1	HANGOVER GND CON 124.75 353.75
-----------------------	---	--------------------------------------	--------------------------------------	--------------------------------------	------------------------------	-------------------------------------	---------------------------------------

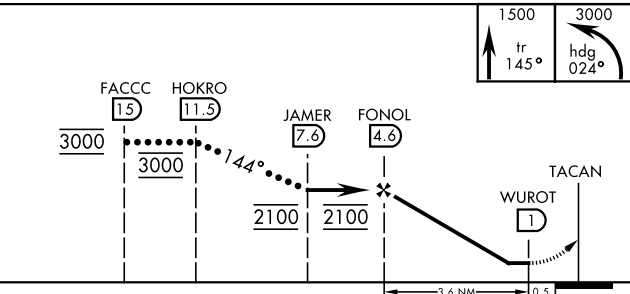
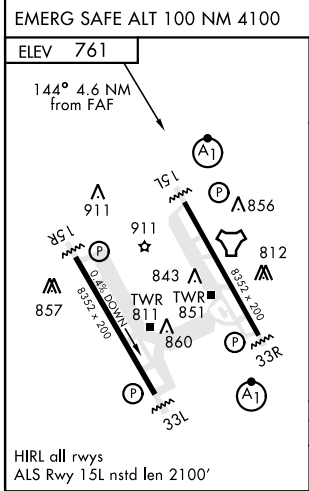


RANDOLPH
Chan 36 DHK



SC-3, 25 FEB 2021 to 25 MAR 2021

SC-3, 25 FEB 2021 to 25 MAR 2021



CATEGORY	C	D	E
C CIRCLING*	1300-1 1/2 539 (600-1 1/2)	1800-3	1039 (1100-3)

HI-TACAN A