

VOR/DME LFD 111.2 Chan 49	APP CRS 328°	Rwy Idg TDZE Apt Elev	NA NA 941
---	------------------------	-----------------------------	--------------------------------------

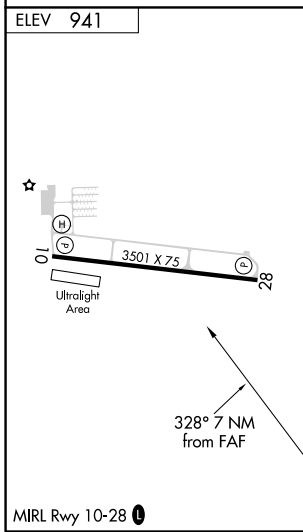
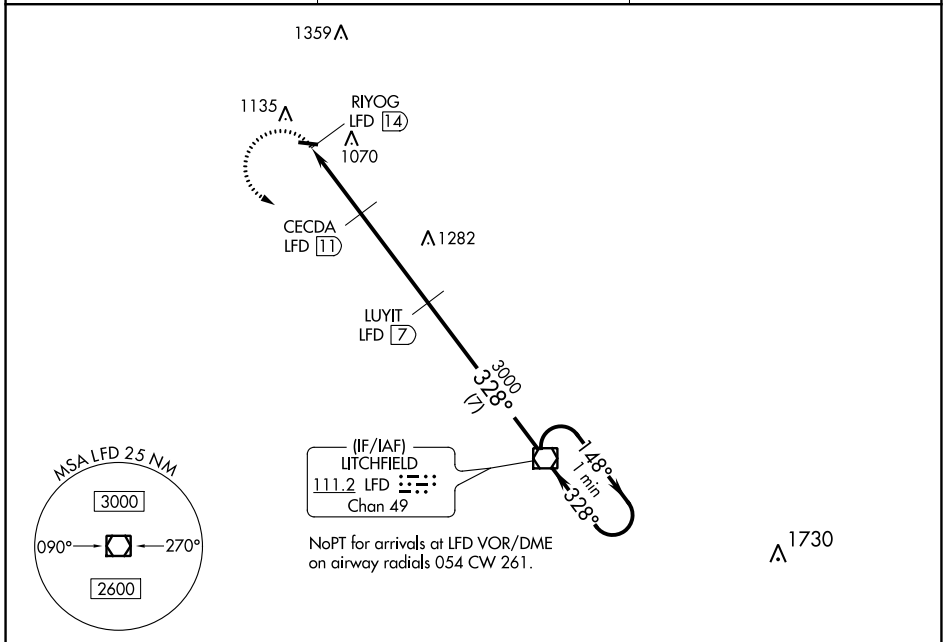
VOR/DME-A

BROOKS FIELD (RMY)

⚠ When local altimeter setting not received, use Battle Creek altimeter setting and increase all MDA 40 feet. Helicopter visibility reduction below $\frac{3}{4}$ SM NA. Night landing: Rwy 10 NA.

MISSED APPROACH: Climbing left turn to 3000 direct LFD VOR/DME and hold.

AWOS-3 120.025	GREAT LAKES APP CON ★ 119.2 239.25	UNICOM 122.8 (CTAF) U
--------------------------	--	--



3000	LFD	LUYIT LFD 7	LFD VOR/DME	One Minute Holding Pattern
RIYOG LFD 14	CECEA LFD 11	3000	328°	148°
1680	3000	328°	3000	← 328°
3 NM	4 NM	7 NM		
CATEGORY	A	B	C	D
CIRCLING	1500-1	559 (600-1)	1500-1½ 559 (600-1½)	NA

EC-1, 25 FEB 2021 to 25 MAR 2021

EC-1, 25 FEB 2021 to 25 MAR 2021