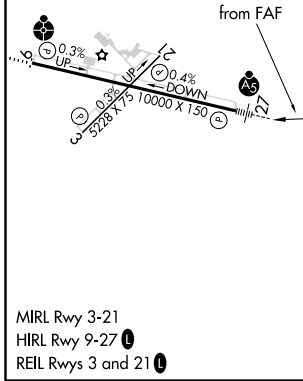
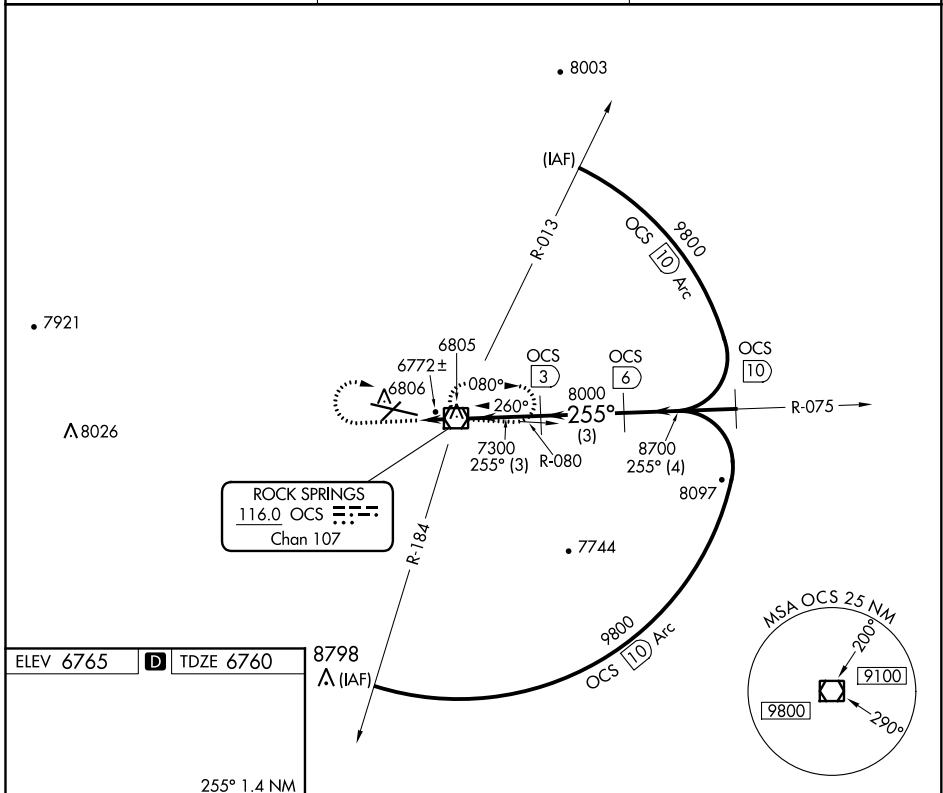


VOR/DME OCS 116.0 Chan 107	APP CRS 255°	Rwy Idg TDZE Apt Elev	10000 6760 6765
--	------------------------	-----------------------------	--

VOR/DME RWY 27

SOUTHWEST WYOMING RGNL (R.K.S)

Inoperative table does not apply to Cat D.		MALSR	MISSED APPROACH: Climb to 7700, then climbing right turn to 9100 direct OCS VOR/DME and hold.
ASOS 118.375	SALT LAKE CENTER 124.35 353.5	UNICOM 122.8 (CTAF) 0	



ELEV 6765	D TDZE 6760	8798 △ (IAF)	7700	9100	OCS	OCS 3	OCS 6	OCS 10
255° 1.4 NM from FAF								
CATEGORY	A	B	C	D				
S-27	7040-½ 280 (300-½)			7040-1 280 (300-1)				
C CIRCLING	7140-1 375 (400-1)	7220-1 455 (500-1)	7220-1½ 455 (500-1½)		NA			

NW-1, 25 FEB 2021 to 25 MAR 2021

NW-1, 25 FEB 2021 to 25 MAR 2021