

VOR/DME R1W 114.05 Chan 87(Y)	APP CRS 101°	Rwy Idg 8204 TDZE 5516 Apt Elev 5516
---	------------------------	---

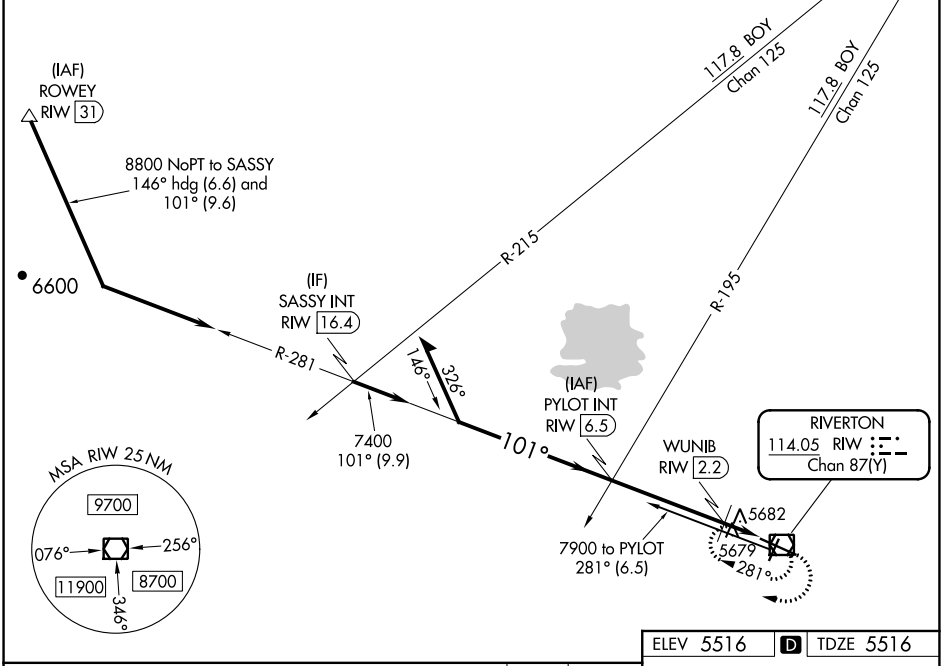
VOR RWY 10

CENTRAL WYOMING RGNL (R1W)

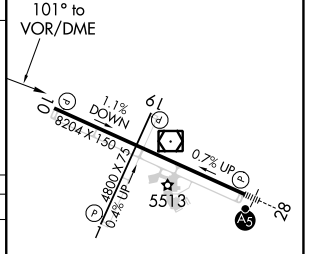
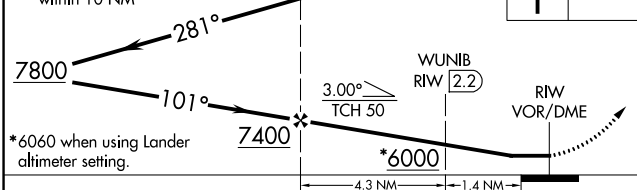
⚠ When local altimeter setting not received, use Lander altimeter setting and increase all MDA 60 feet and increase S-10 Cat C and D visibility ¼ mile and Circling Cat C visibility ½ mile, increase WUNIB fix minimums Cat C and D visibility ½ mile. Rwy 10 helicopter visibility reduction below ¾ SM NA.

MISSED APPROACH: Climb to 7900 in R1W VOR/DME holding pattern.

ASOS 121.425	SALT LAKE CENTER 133.25 285.6	UNICOM 122.8 (CTAF) 0
------------------------	---	---------------------------------



ELEV 5516	D TDZE 5516
-----------	--------------------



CATEGORY	A	B	C	D
S-10	6000-1	484 (500-1)	6000-1 ¾	484 (500-1 ¾)
C CIRCLING	6000-1	484 (500-1)	6000-1 ½	6120-2 484 (500-1 ½) 604 (600-2)
WUNIB FIX MINIMUMS (DME REQUIRED)				
S-10	5940-1	424 (500-1)	5940-1 ¼	424 (500-1 ¼)
C CIRCLING	6000-1	484 (500-1)	6000-1 ½	6120-2 484 (500-1 ½) 604 (700-2)

REIL Rws 1, 10, and 19 **0**

MIRL Rwy 1-19 **0**

HIRL Rwy 10-28 **0**

NW-1, 25 FEB 2021 to 25 MAR 2021

NW-1, 25 FEB 2021 to 25 MAR 2021