


WAAS CH 61115 W28A	APP CRS 284°	Rwy Idg 8204 TDZE 5459 Apt Elev 5528
----------------------------------------	------------------------	-----------------------------------------------------------------


RNAV (GPS) RWY 28

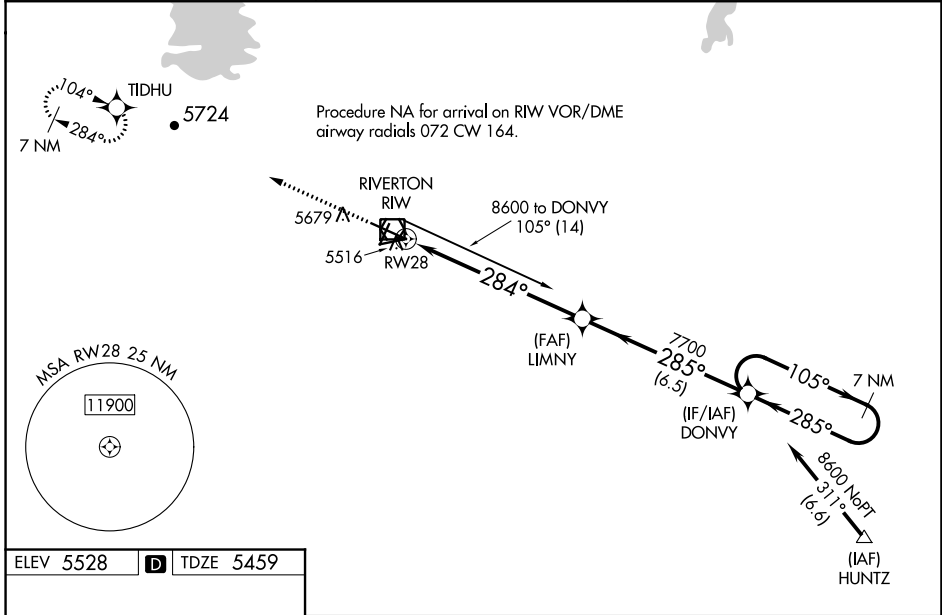
CENTRAL WYOMING RGNL (RIW)

V DME/DME RNP-0.3 NA. Baro-VNAV and VDP NA when using Lander altimeter setting.
A For uncompensated Baro-VNAV systems, LNAV/VNAV NA below -27°C (-16°F) or above 48°C (118°F). For inop MALSR, increase LNAV/VNAV all Cats visibility to 7/8 mile and LNAV Cat C and D visibility to 1 mile. When local altimeter setting not received, use Lander altimeter setting: increase LPV DA to 5713 feet, LNAV/VNAV DA to 5763 and all visibilities 1/8 mile; increase all MDA 60 feet and LNAV Cat C and D visibility 1/8 mile. For inop MALSR, when using Lander altimeter setting, increase LPV all Cats visibility to 7/8 mile and LNAV/VNAV all Cats visibility to 1 mile.

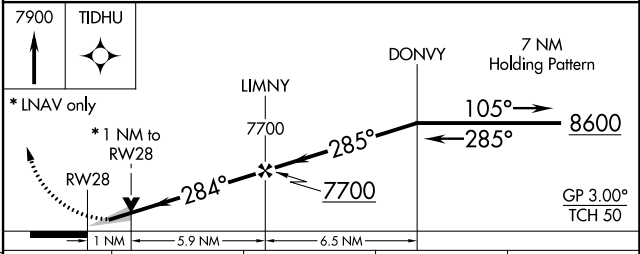
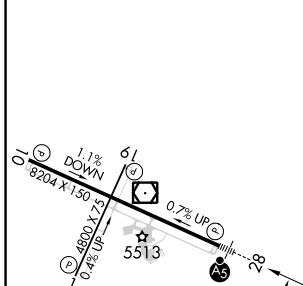
MALSR 

MISSED APPROACH: Climb to 7900 direct TIDHU and hold.




ASOS 121.425	SALT LAKE CENTER 133.25 285.6	UNICOM 122.8 (CTAF) 
------------------------	-----------------------------------------	-----------------------------------------------------------------------------------------------------------------



ELEV 5528	D	TDZE 5459
-----------	----------	-----------



CATEGORY	A	B	C	D
LPV DA		5659-1/2	200 (200-1/2)	
LNAV/VNAV DA		5709-1/2	250 (200-1/2)	
LNAV MDA	5820-1/2	361 (400-1/2)	5820-5/8	361 (400-5/8)
C CIRCLING	6000-1	472 (500-1)	6000-1 1/2	6120-2
			472 (500-1 1/2)	592 (600-2)

REIL Rwy 1, 10, and 19 
 MIRL Rwy 1-19 
 HIRL Rwy 10-28 

NW-1, 25 FEB 2021 to 25 MAR 2021

NW-1, 25 FEB 2021 to 25 MAR 2021