

TACAN Y RWY 14

TACAN RIV Chan 77	APCH CRS 106°	Rwy ldg 13,302 TDZE 1536 Arprt Elev 1536
-----------------------------	-------------------------	---

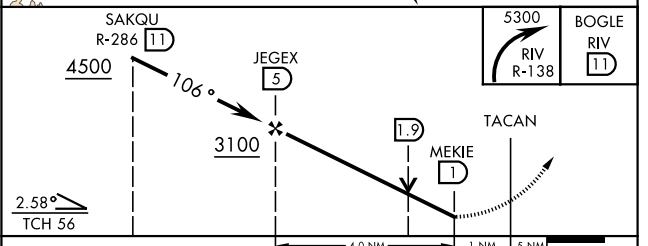
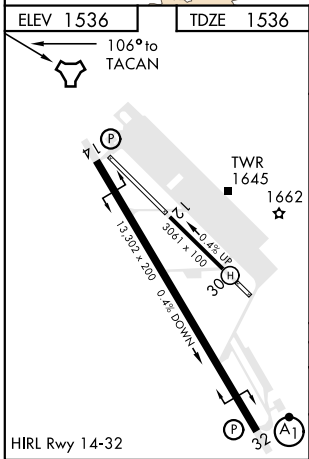
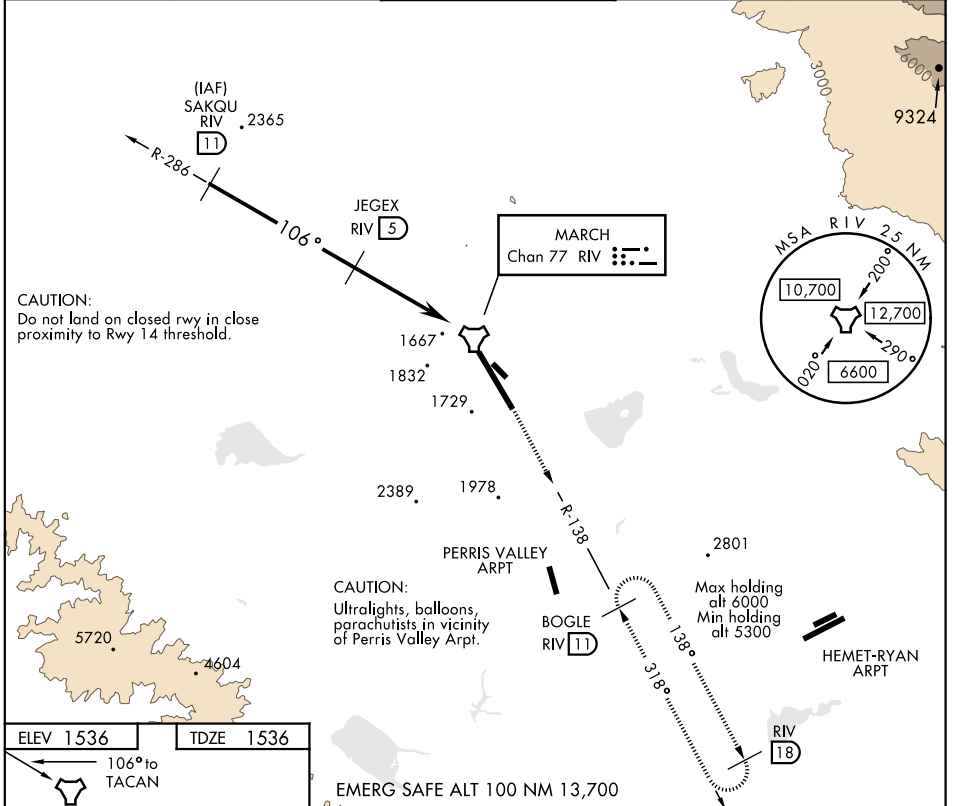
AL-348 [USAF]

MARCH ARB (KRIV)

⚠ * Circling not authorized NE of Rwy 14-32. Rapid rising terrain.

MISSED APPROACH: Climb out RIV TACAN R-138 direct BOGLE, continue to climb in hold to 5300.

ATIS 134.75 239.05	SOCAL APP CON 134.0 278.3	MARCH TOWER 127.65 253.5	GND CON 121.75 335.8	CLNC DEL 121.75 335.8
------------------------------	-------------------------------------	------------------------------------	--------------------------------	---------------------------------



CATEGORY	A	B	C	D	E
S-14	2260-1 $\frac{7}{8}$ 724 (800-1 $\frac{7}{8}$)		2260-2 724 (800-2)		
CIRCLING*	2260-1 $\frac{7}{8}$ 724 (800-1 $\frac{7}{8}$)	2260-1 $\frac{7}{8}$ 724 (800-1 $\frac{7}{8}$)	2300-2 $\frac{1}{4}$ 764 (800-2 $\frac{1}{4}$)	2440-3 904 (1000-3)	2840-3 1304(1400-3)

TACAN Y RWY 14

SW-3, 25 FEB 2021 to 25 MAR 2021

SW-3, 25 FEB 2021 to 25 MAR 2021