

RIVERSIDE, CALIFORNIA

HI-TACAN Z RWY 32

TACAN RIV Chan 77	APCH CRS 318°	Rwy ldg 13,302 TDZE 1497 Arprt Elev 1536
----------------------	------------------	--

JAL-348 [USAF]

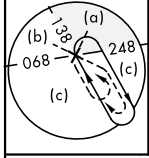
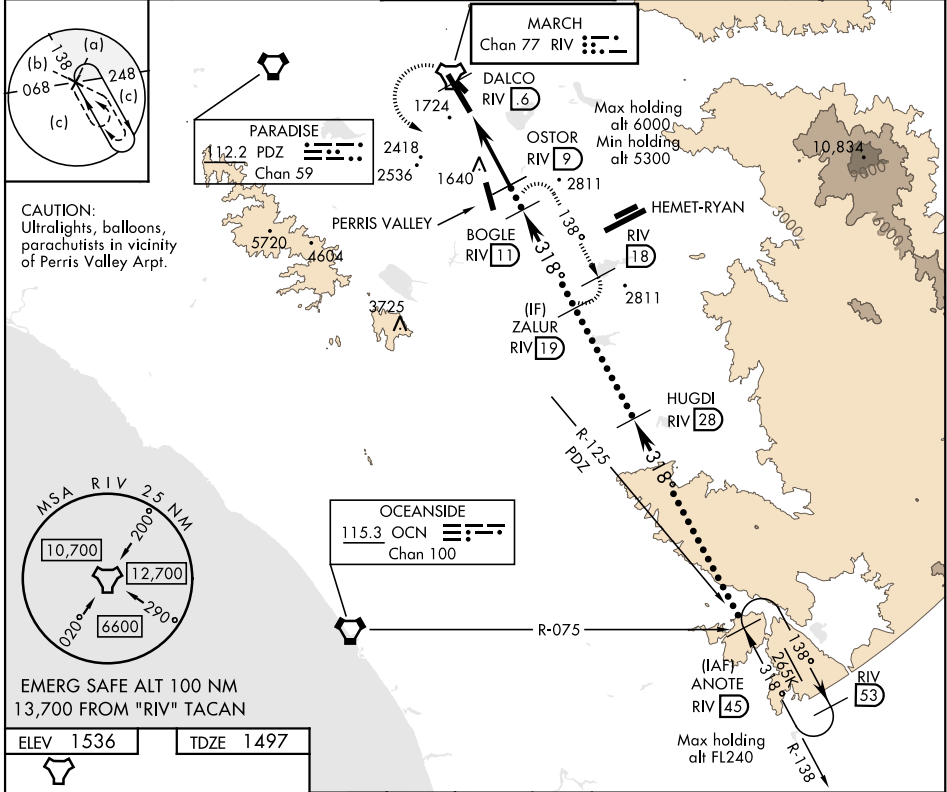
MARCH ARB (KRIV)

▼ * When ALS inop, increase vis to 1½ miles.
 ** Circling not authorized NE of Rwy 14-32.
 Rapid rising terrain.

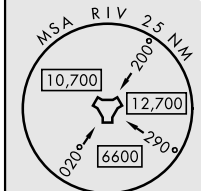


MISSED APPROACH: Climb to 5300 on RIV TACAN
 R-138 to DALCO, then turn left to intercept RIV R-138
 direct BOGLE, continue climb in hold to 5300.

ATIS 134.75 239.05	SOCAL APP CON 134.0 278.3	MARCH TOWER 127.65 253.5	GND CON 121.75 335.8	CLNC DEL 121.75 335.8
-----------------------	------------------------------	-----------------------------	-------------------------	--------------------------

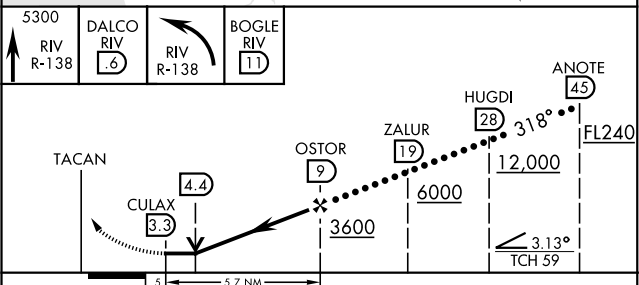
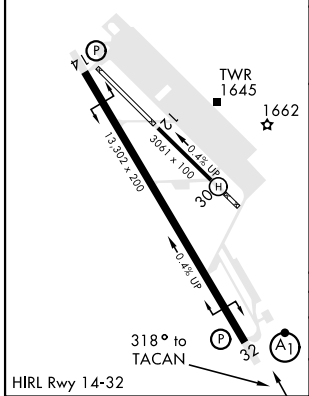


CAUTION:
 Ultralights, balloons,
 parachutists in vicinity
 of Perris Valley Arprt.



EMERG SAFE ALT 100 NM
 13,700 FROM "RIV" TACAN

ELEV 1536	TDZE 1497
-----------	-----------



CATEGORY	C	D	E
S-32 *	2040/60 543 (600-1½)		
CIRCLING **	2300-2¼ 764 (800-2¼)	2440-3 904 (1000-3)	2840-3 1304 (1400-3)

RIVERSIDE, CALIFORNIA
 Amdt 14 31DEC20

33°53'N-117°16'W

MARCH ARB (KRIV)

HI-TACAN Z RWY 32

SW-3, 25 FEB 2021 to 25 MAR 2021

SW-3, 25 FEB 2021 to 25 MAR 2021