

# HI-ILS or LOC Z RWY 32

LOC I-RIV <b>110.1</b>	APCH CRS <b>315°</b>	Rwy ldg <b>13,302</b> TDZE <b>1497</b> Arpt Elev <b>1536</b>	JAL-348 [USAF]	MARCH ARB (KRIV)
---------------------------	-------------------------	--	----------------	------------------

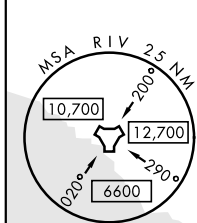
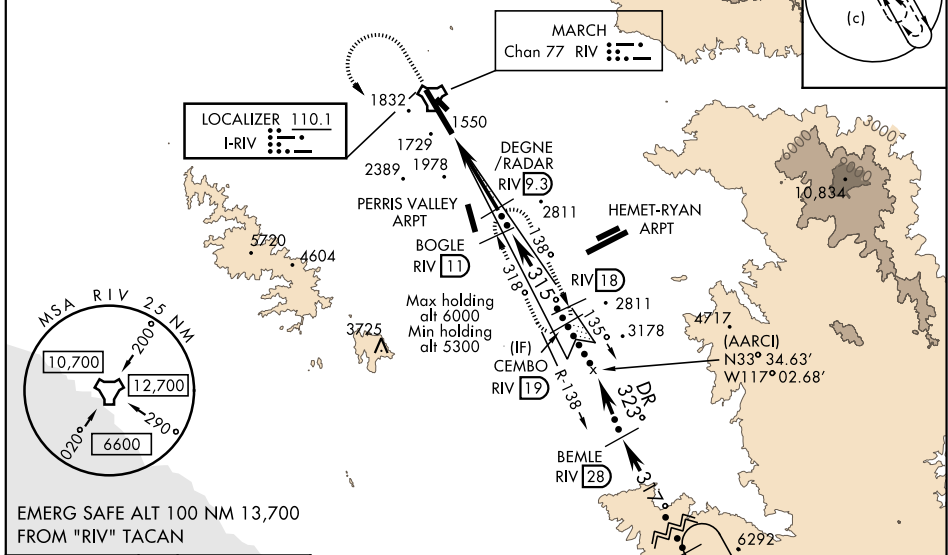
▼ \* When ALS inop, increase CAT CDE RVR to 40 and vis to ¾ mile.  
 \*\* When ALS inop, increase CAT CDE RVR to 60 and vis to 1 ½ mile.  
 \*\*\* Circling not authorized NE of Rwy 14-32. Rapid rising terrain.



† MISSED APPROACH: Climb to 5300 direct RIV TACAN, then turn left to intercept RIV R-138 direct BOGLE, continue climb in hold to 5300.

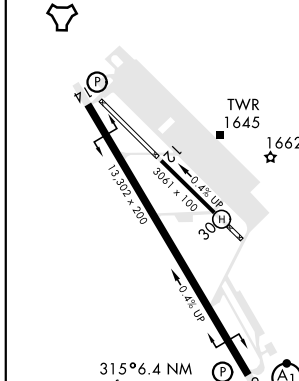
ATIS <b>134.75 239.05</b>	SOCAL APP CON <b>134.0 278.3</b>	MARCH TOWER <b>127.65 253.5</b>	GND CON <b>121.75 335.8</b>	CLNC DEL <b>121.75 335.8</b>
------------------------------	-------------------------------------	------------------------------------	--------------------------------	---------------------------------

CAUTION: Ultralights, balloons, parachutists in vicinity of Perris Valley Arpt.  
 † Missed approach requires use of RNAV or ATC RADAR monitoring.



EMERG SAFE ALT 100 NM 13,700 FROM "RIV" TACAN

ELEV 1536	TDZE 1497
-----------	-----------



HIRL RWY 14-32		TACAN		BOGLE RIV (1)		BEMLE R-137 (28)		HENSA R-137 (45)	
FAF to MAP 5.9 NM		KIMDE (3.3)		DEGNE/RADAR (2.3)		Intcp Lclz (AARCI) (19)		FL240	
CATEGORY		C		D		E			
S-ILS 32 *		1697/24		200		(200-½)			
S-LOC 32 ***		1900/40		403		(400-¾)			
Knots		120	140	160	180	200			
Min:Sec		2:57	2:32	2:13	1:58	1:46			
CIRCLING		2300-2¼ 764 (800-2¼)		2440-3 904 (1000-3)		2840-3 1304 (1400-3)			

# HI-ILS or LOC Z RWY 32

SW-3, 25 FEB 2021 to 25 MAR 2021

SW-3, 25 FEB 2021 to 25 MAR 2021

