

WAAS CH 97715 W09A	APP CRS 091°	Rwy Idg 6799 TDZE 1624 Apt Elev 1624
--	------------------------	---

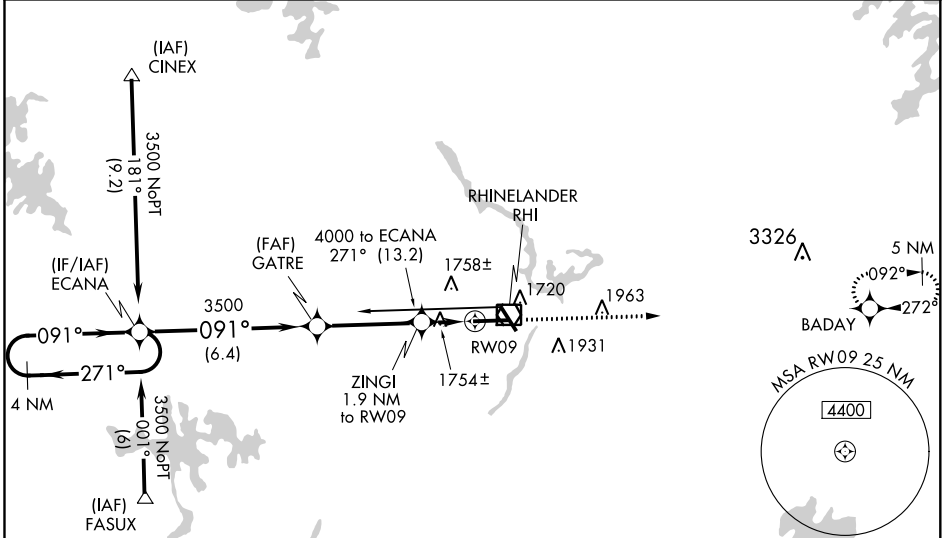
RNAV (GPS) RWY 9
RHINELANDER-ONEIDA COUNTY (RHI)

⚠ Baro-VNAV NA when using Tomahawk altimeter setting. For uncompensated Baro-VNAV systems, LNAV/VNAV NA below -18°C (0°F) or above 45°C (113°F). DME/DME RNP-0.3 NA. When local altimeter setting not received, use Tomahawk altimeter setting: increase LPV all Cats DA to 1883 feet, LNAV/VNAV all Cats DA to 2109 feet and LNAV/VNAV all Cats visibility 1/8 mile; increase all MDA 60 feet and LNAV Cat C/D and Circling Cat C/D visibilities 1/4 mile. For inop MALSR, increase LNAV/VNAV all Cats visibility to 1 1/8 mile. VDP NA when using Tomahawk altimeter setting.

MALSR

MISSED APPROACH:
Climb to 4500 direct BADAY and hold.

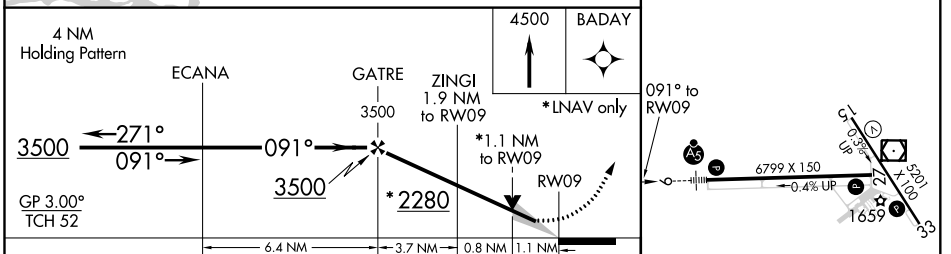
ASOS 126.825	MINNEAPOLIS CENTER 133.65 281.5	UNICOM 123.0 (CTAF)
-------------------------------	--	--------------------------------------



EC-3, 25 FEB 2021 to 25 MAR 2021

EC-3, 25 FEB 2021 to 25 MAR 2021

ELEV 1624	D	TDZE 1624
-----------	----------	-----------



CATEGORY	A	B	C	D
LPV DA		1824-1/2	200 (200-1/2)	
LNAV/VNAV DA		2050-1	426 (500-1)	
LNAV MDA	2020-1/2	396 (400-1/2)	2020-5/8	396 (400-5/8)
CIRCLING	2060-1 436 (500-1)	2220-1 596 (600-1)	2260-1 3/4 636 (700-1 3/4)	2260-2 636 (700-2)

4500 **BADAY**

091° to RWY 09

GP 3.00° TCH 52

6799 X 150
0.4% UP

5201 X 200
1659

HIRL Rwy 9-27 and 15-33
REIL Rwy 15, 27 and 33