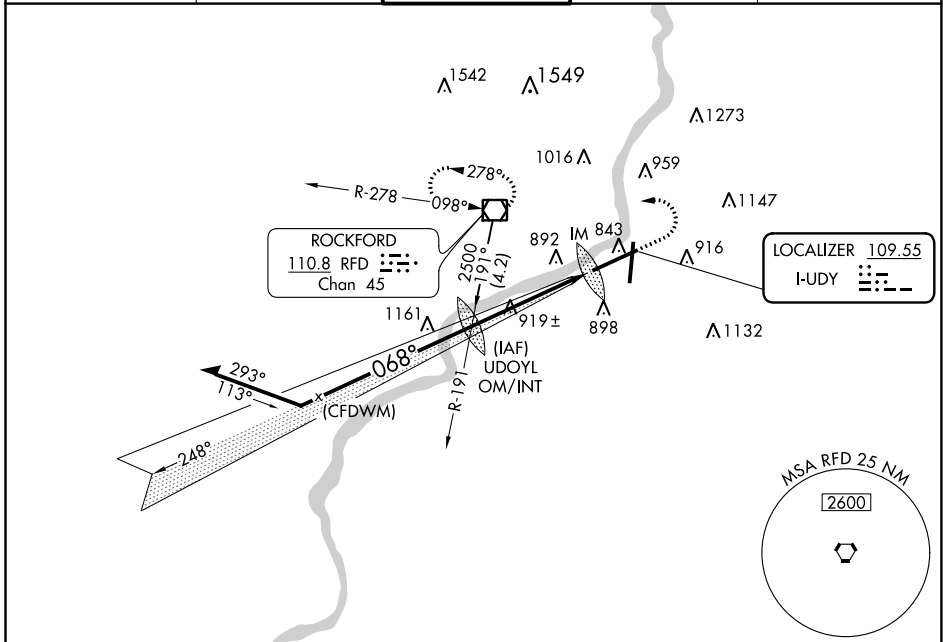


LOC I-UDY 109.55	APP CRS 068°	Rwy Idg 10002 TDZE 742 Apt Elev 742
----------------------------	------------------------	--

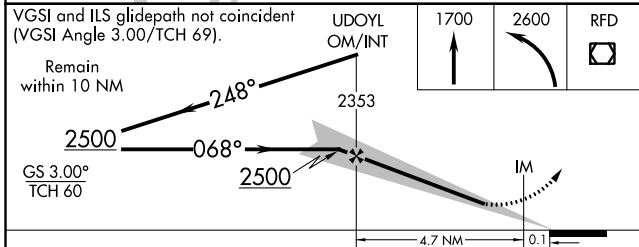
ILS or LOC RWY 7

CHICAGO/ROCKFORD INTL (RFD)

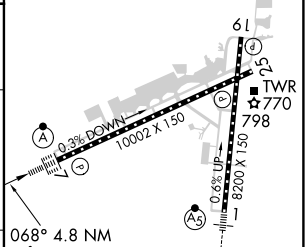
ASR	ALSIF-2	MISSED APPROACH: Climb to 1700 then climbing left turn to 2600 direct RFD VOR/DME and hold.		
ATIS 127.6	ROCKFORD APP CON 121.0 327.0	ROCKFORD TOWER 118.1 290.375	GND CON 121.9 290.375	CLNC DEL 119.25



VGSI and ILS glidepath not coincident (VGSI Angle 3.00/TCH 69).
Remain within 10 NM



ELEV 742	TDZE 742
----------	----------



CATEGORY	A	B	C	D		
S-ILS 7	942/18		200 (200-1/2)			
S-LOC 7	1200/24		458 (500-1/2)			
CIRCLING	1220-1	1280-1	1320-1 1/2	1460-2 1/4		
	478 (500-1)	538 (600-1)	578 (600-1 1/2)	718 (800-2 1/4)		
	FAF to MAP 4.8 NM					
	Knots	60	90	120	150	180
	Min:Sec	4:48	3:12	2:24	1:55	1:36

EC-3, 25 FEB 2021 to 25 MAR 2021

EC-3, 25 FEB 2021 to 25 MAR 2021