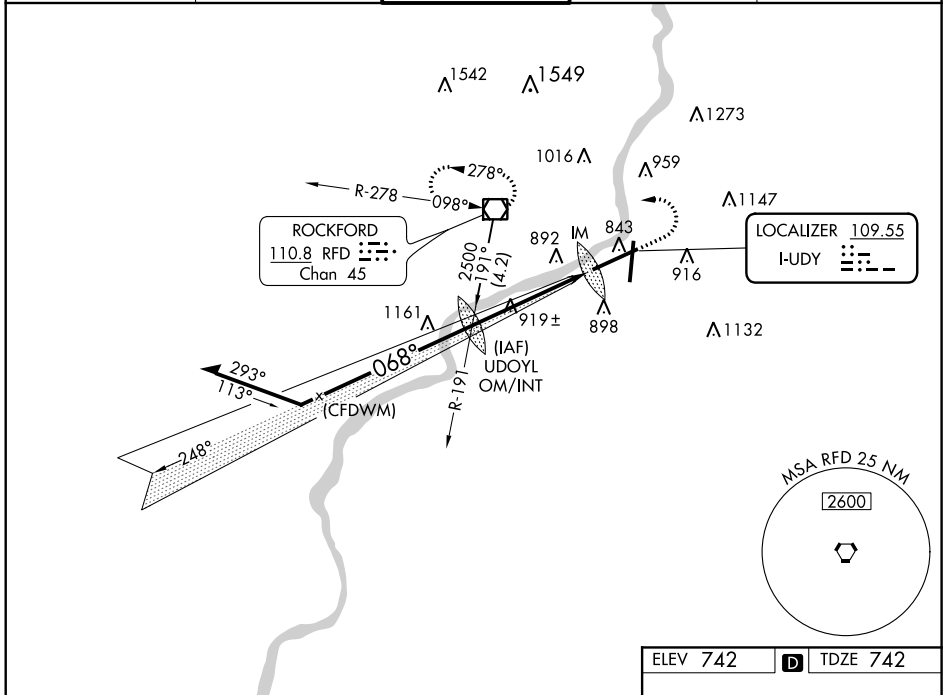


LOC I-JUDY <b>109.55</b>	APP CRS <b>068°</b>	Rwy Idg <b>10002</b> TDZE <b>742</b> Apt Elev <b>742</b>
-----------------------------	------------------------	--

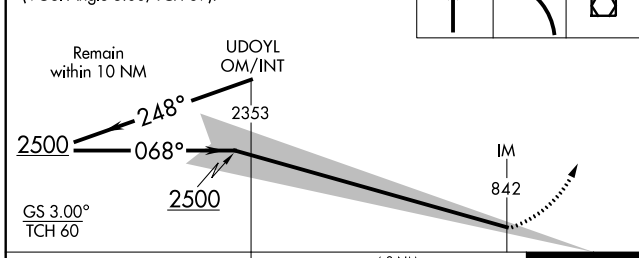
**ILS RWY 7 (CAT II & III)**  
CHICAGO/ROCKFORD INTL (RFD)

<p><b>⚠</b> CAT II: RVR 1000 authorized with specific OPSPEC, MSPEC, or LOA approval and use of autoland or HUD to touchdown.</p> <p><b>ASR</b></p>	<p><b>ALSIF-2</b></p>	<p><b>MISSED APPROACH:</b> Climb to 1700 then climbing left turn to 2600 direct RFD VOR/DME and hold.</p>
---	-----------------------	---

<p>ATIS <b>127.6</b></p>	<p>ROCKFORD APP CON <b>121.0 327.0</b></p>	<p>ROCKFORD TOWER <b>118.1 290.375</b></p>	<p>GND CON <b>121.9 290.375</b></p>	<p>CLNC DEL <b>119.25</b></p>
------------------------------	--	--	---	-----------------------------------



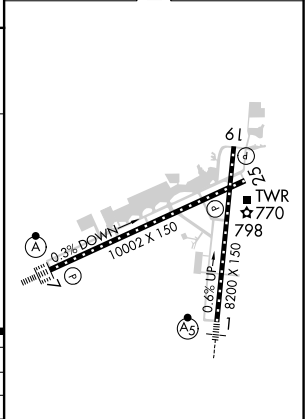
VGSI and ILS glidepath not coincident (VGSI Angle 3.00/TCH 69).



CATEGORY	A	B	C	D
S-ILS 7	CAT II RA 114/12 100 DA 842			
S-ILS 7	CAT III RVR 06			

**CATEGORY II & III ILS - SPECIAL AIRCREW & AIRCRAFT CERTIFICATION REQUIRED**

ELEV 742	<b>D</b> TDZE 742
----------	-------------------



REIL Rws 19 and 25  
HIRL Rws 1-19 and 7-25  
TDZ/CL Rws 1 and 7

EC-3, 25 FEB 2021 to 25 MAR 2021

EC-3, 25 FEB 2021 to 25 MAR 2021