

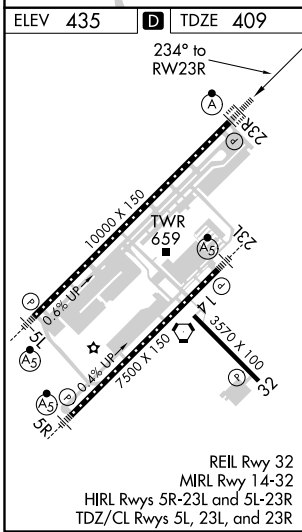
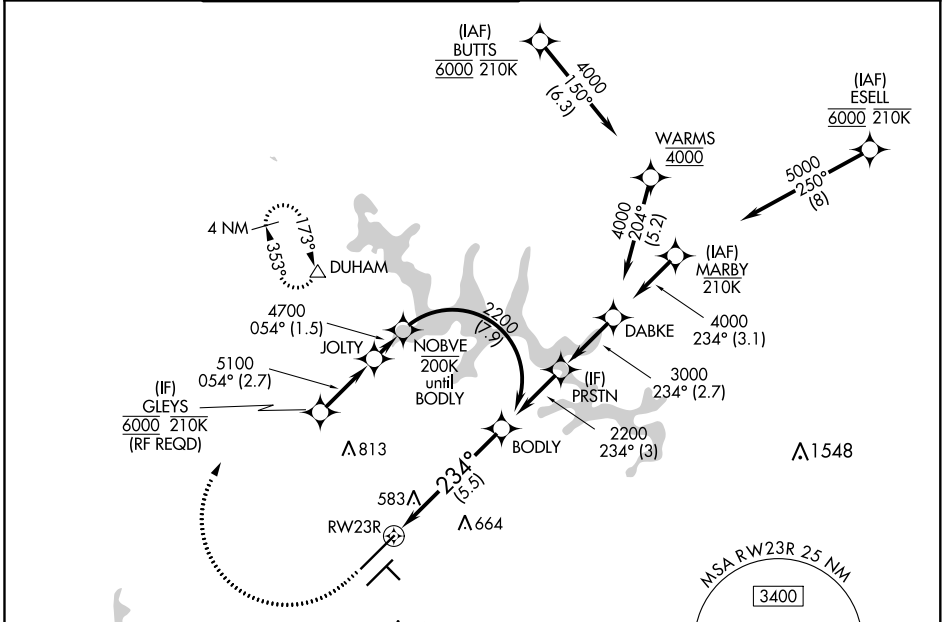
# RNAV (RNP) Z RWY 23R

RALEIGH-DURHAM INTL (RDU)

|             |          |              |
|-------------|----------|--------------|
| APP CRS     | Rwy Idg  | <b>10000</b> |
| <b>234°</b> | TDZE     | <b>409</b>   |
|             | Apt Elev | <b>435</b>   |

|  |        |  |
|--|--------|--|
| RNP AR APCH-GPS.   | ALSF-2 | MISSED APPROACH: Climb to 1000 then climbing right turn to 2200 direct DUHAM and hold. |
| ▼ For uncompensated Baro-VNAV systems, procedure NA below -12°C or above 54°C. For inop ALS, increase RNP 0.15 all Cats visibility to RVR 5500, increase RNP 0.30 all Cats visibility to 1½ SM. Simultaneous approach authorized except for arrivals at GLEYS. |        |  |

|              |                      |   |                                  |  |                                  |              |
|--------------|----------------------|---|----------------------------------|--|----------------------------------|--------------|
| D-ATIS       | RALEIGH APP CON      | (EAST) RALEIGH TOWER (WEST)                   | (EAST) GND CON                   | (WEST)                                       | CLNC DEL                         | CPDLC        |
| <b>123.8</b> | <b>127.675 307.9</b> | <b>127.45 257.8</b><br>Rwys 5R-23L and 1-4-32 | <b>119.3 257.8</b><br>Rwy 5L-23R | <b>121.9 348.6</b><br>Rwys 5R-23L and 1-4-32 | <b>121.7 348.6</b><br>Rwy 5L-23R | <b>120.1</b> |



|   |          |          |             |   |
|---|----------|----------|-------------|---|
| ELEV 435  | <b>D</b> | TDZE 409 |             |   |
| <p>1000 2200 DUHAM VGS1 and RNAV glidepath not coincident (VGS1 Angle 3.00°/TCH 69°)</p> <p>See planview for multiple IF locations.</p> <p>BODYL 2200<br/>RWY 23R 234°<br/>2200<br/>GP 3.00°<br/>TCH 55</p> |          |          |             |   |
| CATEGORY  | A        | B        | C           | D |
| RNP 0.15 DA   |          | 760/30   | 351 (400-¾) |   |
| RNP 0.30 DA   |          | 910/55   | 501 (500-1) |   |

**AUTHORIZATION REQUIRED**

SE-2, 25 FEB 2021 to 25 MAR 2021

SE-2, 25 FEB 2021 to 25 MAR 2021