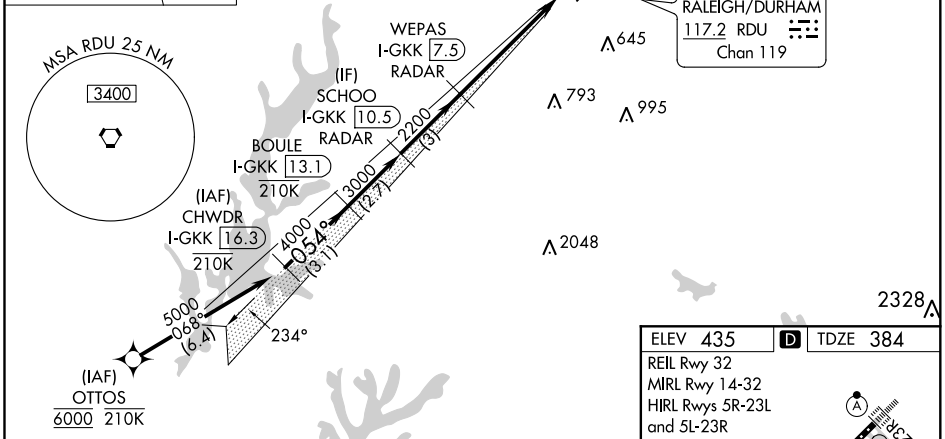
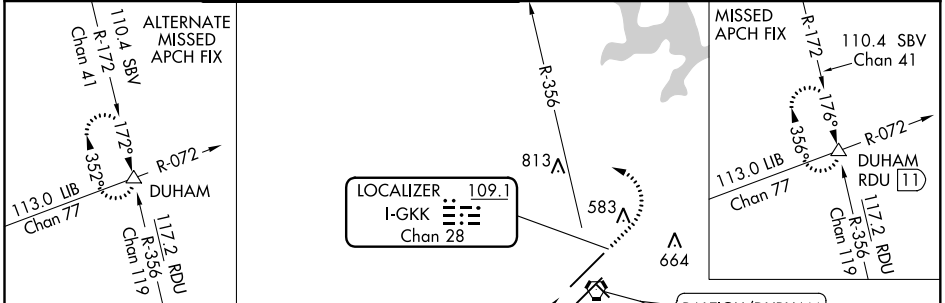


LOC/DME I-GKK <b>109.1</b> Chan 28	APP CRS <b>054°</b>	Rwy Idg TDZE Apt Elev <b>10000</b> <b>384</b> <b>435</b>
--	------------------------	---

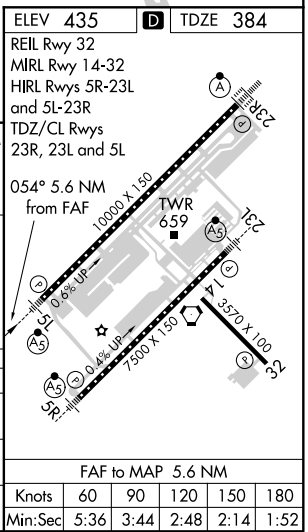
# ILS or LOC RWY 5L

RALEIGH-DURHAM INTL (RDU)

RNAV 1-DME/DME/IRU or GPS or RADAR required for procedure entry. DME or RADAR required for LOC only.	MALSR 	MISSED APPROACH: Climb to 1000 then climbing left turn to 2200 on heading 310° and RDU VORTAC R-356 to DUHAM INT/RDU 11 DME and hold.			
Simultaneous approach authorized.					
D-ATIS <b>123.8</b>	RALEIGH APP CON <b>127.675 307.9</b>	(EAST) RALEIGH TOWER (WEST) <b>127.45 257.8</b> <b>119.3 257.8</b> Rwys 5R-23L and 1-4-32   Rwy 5L-23R	(EAST) GND CON (WEST) <b>121.9 348.6</b> <b>121.7 348.6</b> Rwys 5R-23L and 1-4-32   Rwy 5L-23R	CLNC DEL <b>120.1</b>	CPDLC



CHWDR I-GKK 16.3	BOULE I-GKK 13.1	SCHOO I-GKK 10.5	WEPAS I-GKK 7.5	1000	2200	RDU R-356	DUHAM
5000-0.54°			2200	↑	hdg 310°		△
GS 3.00° TCH 57			*I-GKK 3.1	*LOC only.			
VGSi and ILS glidepath not coincident (VGSi Angle 3.00/TCH 72).							
-3.1 NM		-2.7 NM		-3 NM		-4.3 NM	
CATEGORY	A		B		C		D
S-ILS 5L	598/18		214 (200-½)				
S-LOC 5L	840/24 456 (500-½)		840/45 456 (500-¾)				
CIRCLING	960-1 525 (600-1)		1020-1½ 585 (600-1½)		1180-2½ 745 (800-2½)		



SE-2, 25 FEB 2021 to 25 MAR 2021

SE-2, 25 FEB 2021 to 25 MAR 2021