

LOC/DME I-LEI <b>108.5</b> Chan <b>22</b>	APP CRS <b>234°</b>	Rwy Idg <b>7500</b> TDZE <b>435</b> Apt Elev <b>435</b>
---	------------------------	---

# ILS or LOC RWY 23L

RALEIGH-DURHAM INTL (RDU)

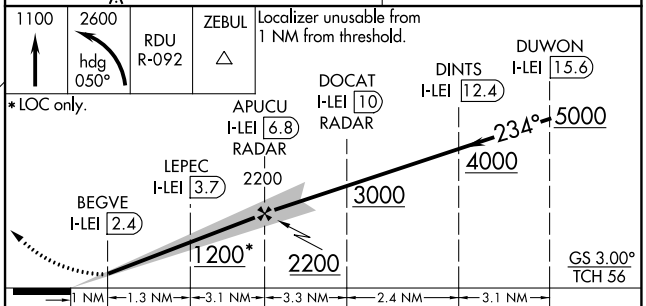
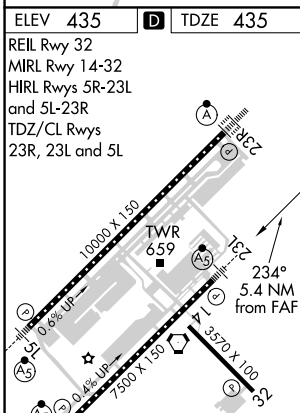
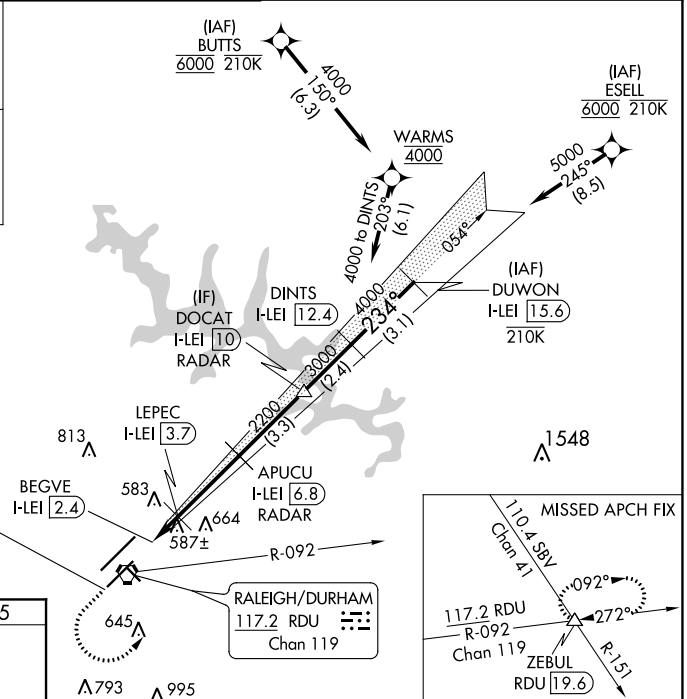
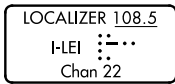
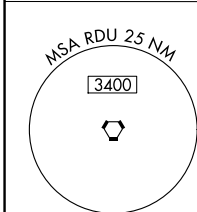
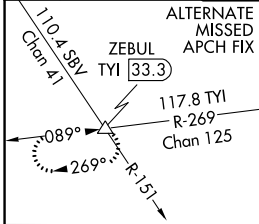
RNAV 1-DME/DME/IRU or GPS or RADAR required for procedure entry.  
DME required for LOC only.

**⚠** Simultaneous approach authorized. For inop ALS, increase S-ILS 23L all Cats visibility to RVR 5500. Localizer unusable for coupled approaches below 1100 or within 2 NM of threshold.



**MISSED APPROACH:** Climb to 1100 then climbing left turn to 2600 on heading 050° and RDU VORTAC R-092 to ZEBUL INT and hold.

D-ATIS <b>123.8</b>	RALEIGH APP CON <b>127.675 307.9</b>	(EAST) RALEIGH TOWER <b>127.45 257.8</b>	(WEST) RALEIGH TOWER <b>119.3 257.8</b>	(EAST) GND CON <b>121.9 348.6</b>	(WEST) GND CON <b>121.7 348.6</b>	CLNC DEL <b>120.1</b>	CPDLC
		Rwys 5R-23L and 14-32 Rwy 5L-23R		Rwys 5R-23L and 14-32 Rwy 5L-23R			



CATEGORY	A	B	C	D
S-ILS 23L		806/35	371 (400- $\frac{3}{4}$ )	
S-LOC 23L		840/40	405 (500- $\frac{3}{4}$ )	
<b>C</b> CIRCLING	960-1 $\frac{1}{4}$	525 (600-1 $\frac{1}{4}$ )	1020-1 $\frac{1}{2}$ 585 (600-1 $\frac{1}{2}$ )	1180-2 $\frac{1}{2}$ 745 (800-2 $\frac{1}{2}$ )