

APP CRS	Rwy Idg	7031
226°	TDZE	3065
	Apt Elev	3080

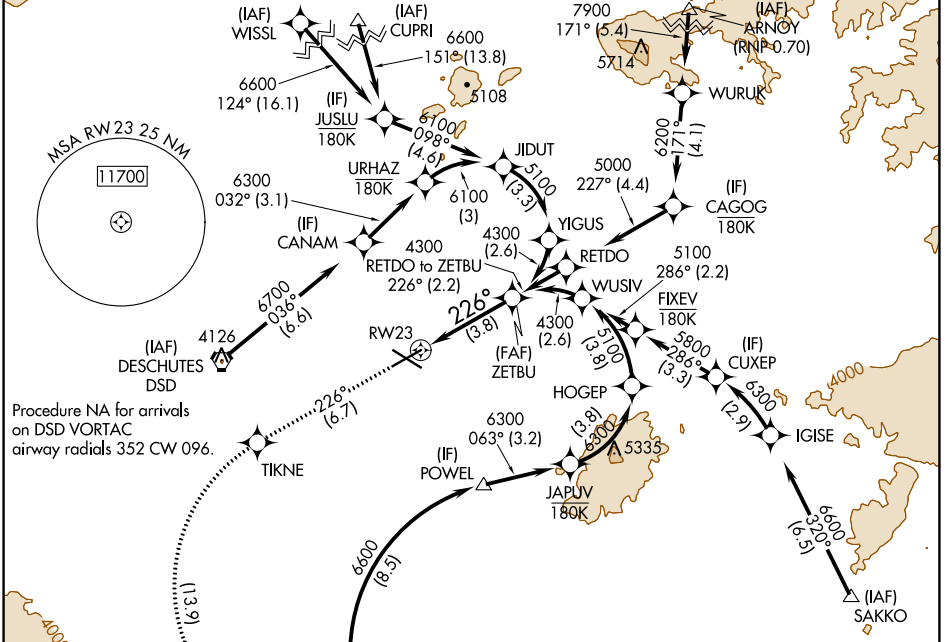
RNAV (RNP) Z RWY 23

ROBERTS FIELD (RDM)

▼ For uncompensated Baro-VNAV systems, procedure NA below -20°C (-4°F) or above 53°C (129°F). For inop MALSRL, increase RNP 0.10 all Cats visibility to ¾ mile. RF required. GPS required.

MALSRL MISSED APPROACH: Climb to 8500 on track 226° to TIKNE left turn to PUKAJ and on track 090° to URBIA and hold, continue climb-in-hold to 8500.

ATIS 119.025	SEATTLE CENTER 126.15 269.475	REDMOND TOWER* 124.5 (CTAF) 256.8	GND CON 121.8	UNICOM 122.95
------------------------	---	---	-------------------------	-------------------------

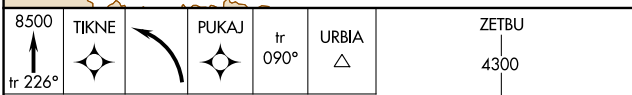


Procedure NA for arrivals on DSD VORTAC airway radials 352 CW 096.

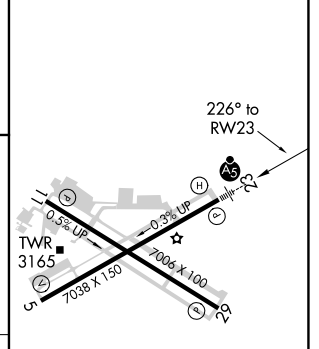
NW-1, 25 FEB 2021 to 25 MAR 2021

NW-1, 25 FEB 2021 to 25 MAR 2021

ELEV 3080	D	TDZE 3065
-----------	----------	-----------



VGSI and RNAV glidepath not coincident (VGSI Angle 3.00/TCH 51).
 See planview for multiple IF locations.
 GP 3.00° TCH 47



CATEGORY	A	B	C	D
RNP 0.10 DA		3315-1/2	250 (300-1/2)	
RNP 0.30 DA		3552-1 1/4	487 (500-1 1/4)	

REIL Rwy 5, 11, and 29 **Ⓛ**
 HIRL Rwy 5-23 **Ⓛ**
 MIRL Rwy 11-29 **Ⓛ**

AUTHORIZATION REQUIRED