

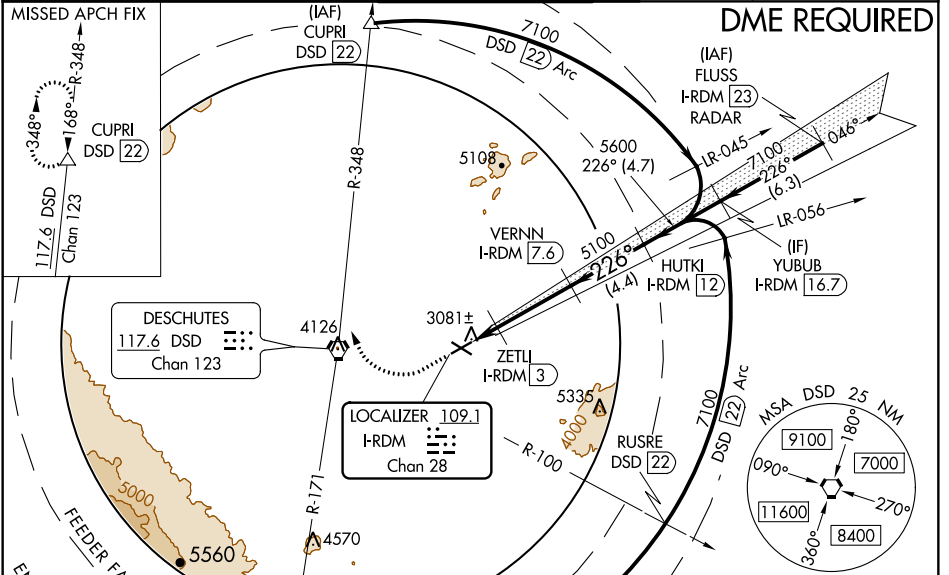
LOC/DME I-RDM <b>109.1</b> Chan <b>28</b>	APP CRS <b>226°</b>	Rwy Idg TDZE Apt Elev <b>7031</b> <b>3065</b> <b>3080</b>
---	------------------------	--

# ILS or LOC RWY 23

ROBERTS FIELD (RDM)

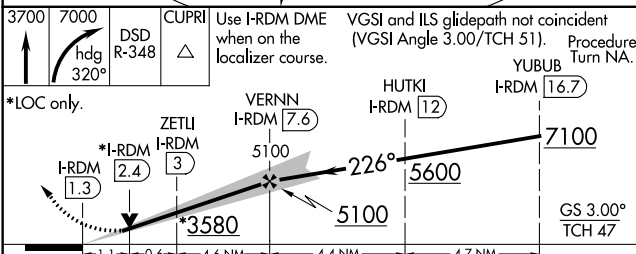
NA Autopilot coupled approach NA below 4370. DME required. When local altimeter setting not received, use Bend altimeter setting: increase DA to 3341 feet; increase all MDAs 80 feet and all Cat C, D and E visibilities 1/2 mile. For inop MALSR, increase S-ILS-23 Cat E visibility to 3/4 mile and S-LOC-23 Cats C, D and E visibility to 1 mile. When using Bend altimeter setting increase S-ILS-23 all Cats visibility to 1 mile and increase S-LOC-23 Cats C, D and E visibility to 1 1/2 mile. VDP NA when using Bend altimeter setting.	MALSR 	MISSED APPROACH: Climb to 3700 then climbing right turn to 7000 on heading 320° and DSD VORTAC R-348 to CUPRI/DSD 22 DME and hold.
--	-----------	---

ATIS <b>119.025</b>	SEATTLE CENTER <b>126.15 269.475</b>	REDMOND TOWER★ <b>124.5 (CTAF) 256.8</b>	GND CON <b>121.8</b>	UNICOM <b>122.95</b>
------------------------	---	---	-------------------------	-------------------------

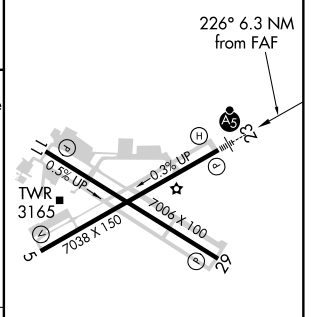


ELEV <b>3080</b>	<b>D</b> TDZE <b>3065</b>
------------------	---------------------------

3700 7000  
 hdg 320°  
 DSD R-348  
 CUPRI Use I-RDM DME when on the localizer course. VGSI and ILS glidepath not coincident (VGSI Angle 3.00/TCH 51). Procedure Turn NA.



ELEV <b>3080</b>	<b>D</b> TDZE <b>3065</b>
------------------	---------------------------



CATEGORY	A	B	C	D	E
S-ILS 23	3265-1/2 200 (200-1/2)				
S-LOC 23	3440-1/2	375 (400-1/2)	3440-5/8	375 (400-5/8)	
CIRCLING	3540-1 460 (500-1)	3560-1 480 (500-1)	3640-1 1/2 560 (600-1 1/2)	3740-2 660 (700-2)	3820-2 1/2 740 (800-2 1/2)

REIL Rwy 5, 11 and 29  
 HIRL Rwy 5-23  
 MRL Rwy 11-29

NW-1, 25 FEB 2021 to 25 MAR 2021

NW-1, 25 FEB 2021 to 25 MAR 2021