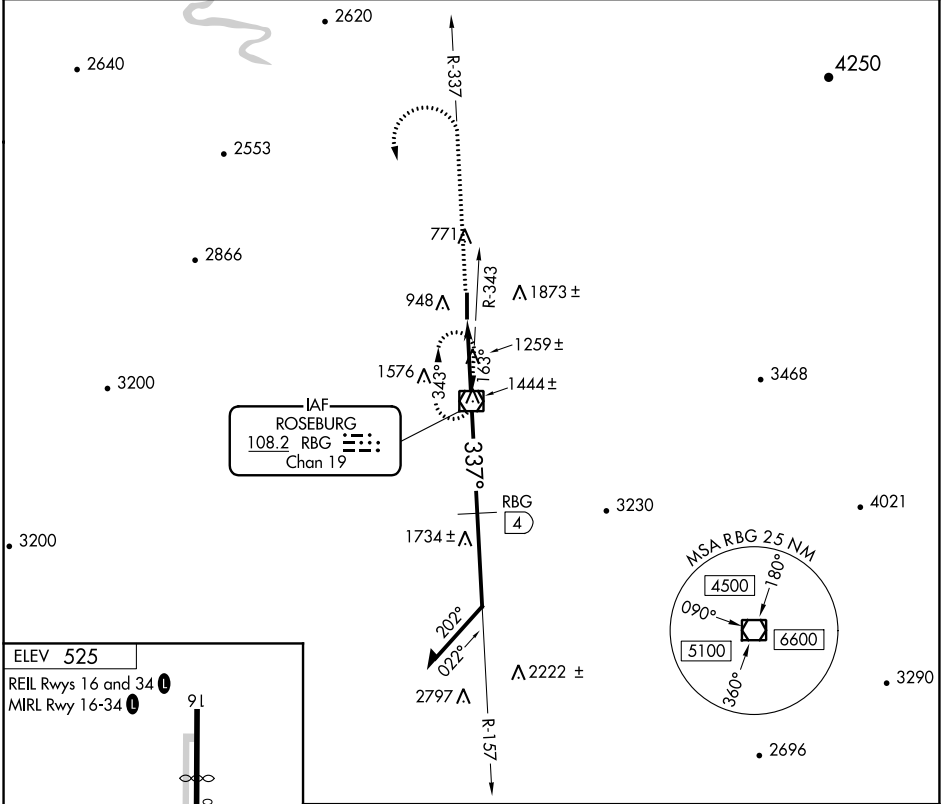


VOR/DME RBG <b>108.2</b> Chan <b>19</b>	APP CRS <b>337°</b>	Rwy Idg TDZE Apt Elev <b>525</b>	<b>N/A</b> <b>N/A</b> <b>525</b>
---	------------------------	--	--

**VOR-A**  
ROSEBURG RGNL (R.B.G)

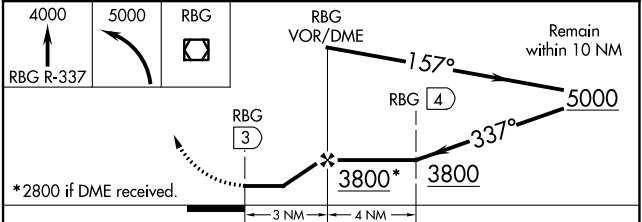
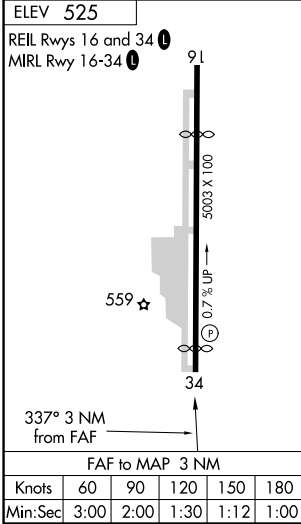
<p><b>▼</b> Circling not authorized east of Rwy 16-34. <b>▲ NA</b> Procedure NA at night. Rwy 34 helicopter visibility below 1 SM NA.</p>	<p>MISSED APPROACH: Climb to 4000 via RBG R-337 within 15 NM; then climbing left turn to 5000 direct RBG VOR/DME and hold.</p>
---	--

ASOS <b>135.475</b>	SEATTLE CENTER <b>127.55 239.0</b>	UNICOM <b>122.8</b> (CTAF) <b>0</b>
------------------------	---------------------------------------	--



NW-1, 25 FEB 2021 to 25 MAR 2021

NW-1, 25 FEB 2021 to 25 MAR 2021



CATEGORY	A	B	C	D
CIRCLING	2600-1¼ 2075 (2100-1¼)	2600-1½ 2075 (2100-1½)	2600-3	2075 (2100-3)
DME MINIMUMS				
CIRCLING	1740-1¼ 1215 (1300-1¼)	1740-1½ 1215 (1300-1½)	1740-3 1215 (1300-3)	1920-3 1395 (1400-3)