

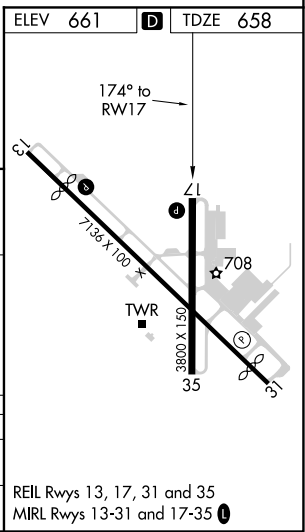
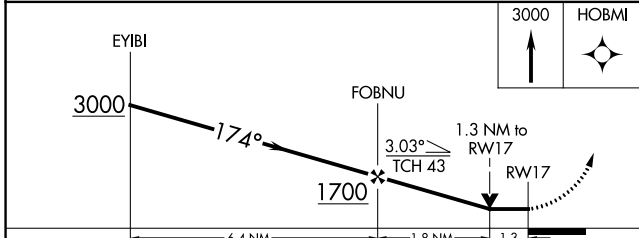
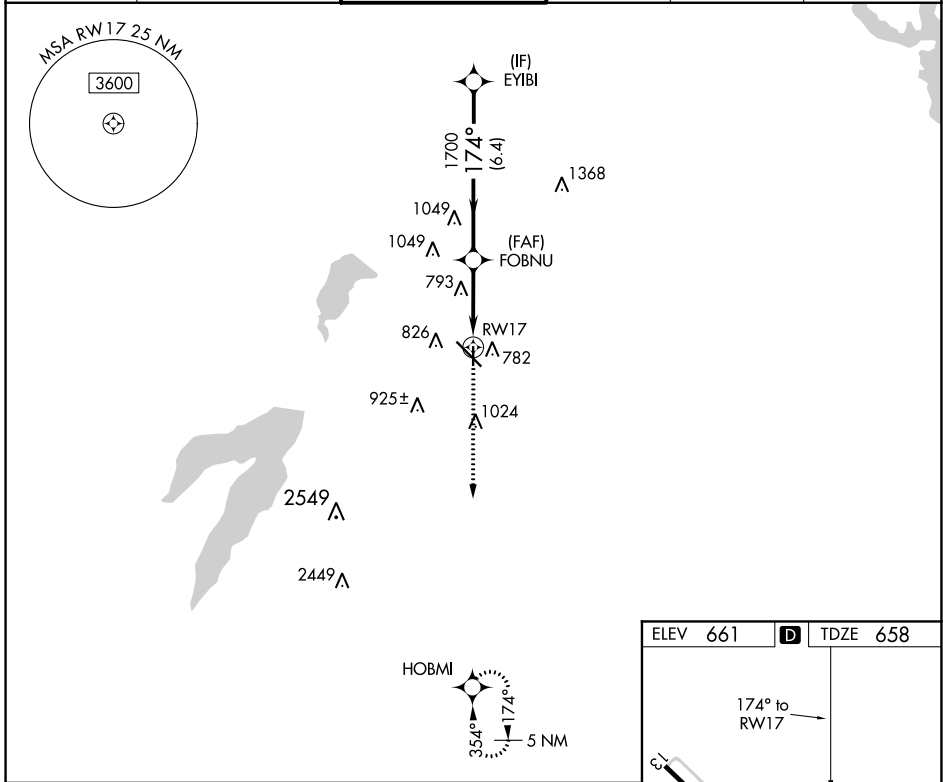
APP CRS 174°	Rwy Idg 3800
	TDZE 658
	Apt Elev 661

RNAV (GPS) RWY 17

DALLAS EXECUTIVE (R.B.D)

RNP APCH.	MISSED APPROACH: Climb to 3000 direct HOBMI and hold.
▽ ▲ Rwy 17 helicopter visibility reduction below ¾ SM NA.	

ATIS 126.35	REGIONAL APP CON 125.2 343.65	EXECUTIVE TOWER ★ 127.25 (CTAF) ①	GND CON 119.475	CLNC DEL 118.625	UNICOM 122.95
-----------------------	-----------------------------------------	---------------------------------------------	---------------------------	----------------------------	-------------------------



CATEGORY	A	B	C	D
LNVA MDA	1100-1	442 (500-1)	1100-1 ³ / ₈ 442 (500-1 ³ / ₈)	1100-1 ¹ / ₂ 442 (500-1 ¹ / ₂)
Ⓢ CIRCLING	1160-1 499 (500-1)	1220-1 559 (600-1)	1340-2 679 (700-2)	1400-2 ¹ / ₄ 739 (800-2 ¹ / ₄)

REIL Rwy 13, 17, 31 and 35
MIRL Rwy 13-31 and 17-35 ①

SC-2, 25 FEB 2021 to 25 MAR 2021

SC-2, 25 FEB 2021 to 25 MAR 2021