

# KUSSO SEVEN DEPARTURE (RNAV)

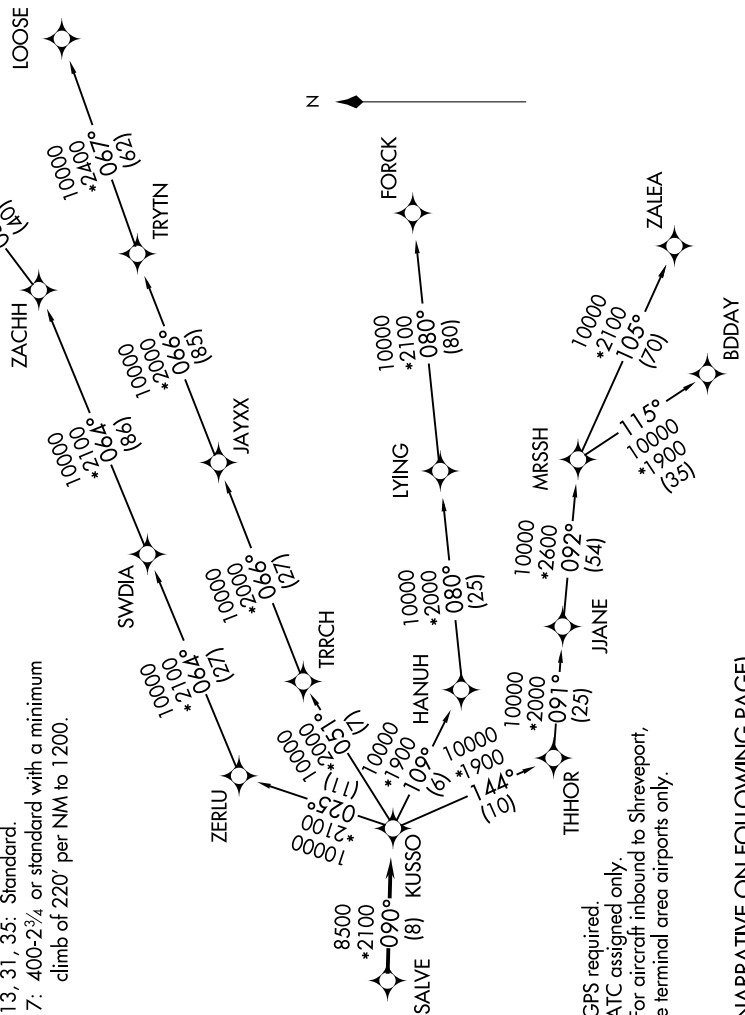
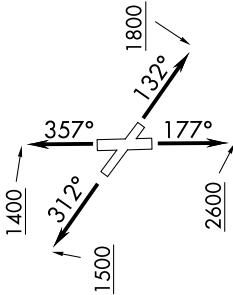
SC-2, 25 FEB 2021 to 25 MAR 2021

## TOP ALTITUDE: ASSIGNED BY ATC

ATIS 126.35  
 CLINC DEL 118.625  
 GND CON 119.475  
 EXECUTIVE TOWER \* 127.25 (CTAF)  
 REGIONAL DEP CON 125.2343.65

### TAKEOFF MINIMUMS

Rwy 13, 31, 35: Standard.  
 Rwy 17: 400-2<sup>3</sup>/<sub>4</sub> or standard with a minimum climb of 220' per NM to 1200.



NOTE: RADAR required.  
 NOTE: RNAV 1.  
 NOTE: DME/DME/IRU or GPS required.  
 NOTE: BDDAY transition: ATC assigned only.  
 NOTE: MRSSH transition: For aircraft inbound to Shreveport, Jackson and Monroe terminal area airports only.

(NARRATIVE ON FOLLOWING PAGE)

NOTE: Chart not to scale.

SC-2, 25 FEB 2021 to 25 MAR 2021

# KUSSO SEVEN DEPARTURE (RNAV)