

WAAS CH 87130 W35A	APP CRS 353°	Rwy Idg TDZE Apt Elev	5501 580 592
--	------------------------	-----------------------------	---

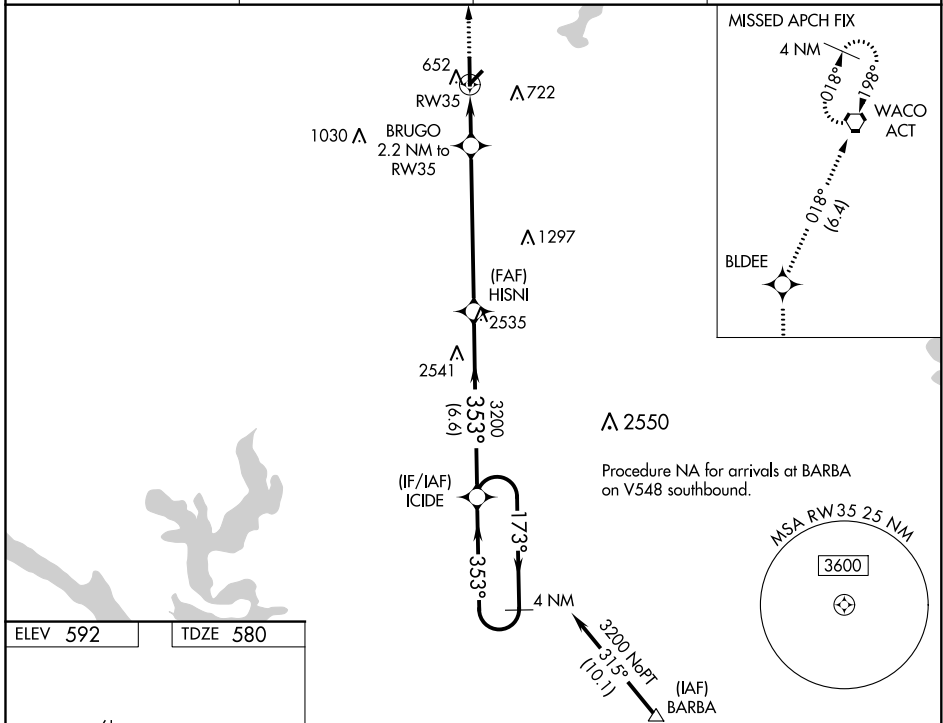
RNAV (GPS) RWY 35

MC GREGOR EXECUTIVE (PWG)

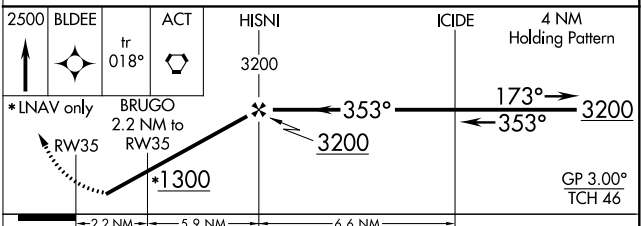
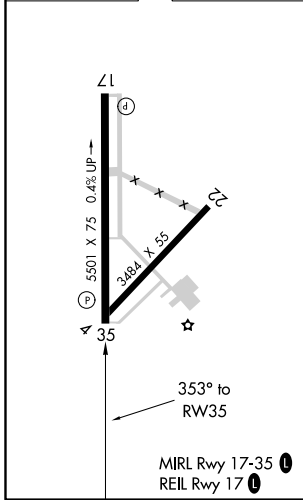
⚠ ASR Circling to Rwy 4 NA at night. Baro-VNAV NA when using Waco Rgnl altimeter setting. For uncompensated Baro-VNAV systems, LNAV/VNAV NA below -16°C (4°F) or above 54°C (130°F). When local altimeter setting not received, use Waco Rgnl altimeter setting increase all DA 31 feet and MDA 40 feet. DME/DME RNP-0.3 NA. Helicopter visibility reduction below 3/4 SM NA.

MISSED APPROACH:
Climb to 2500 direct BLDEE and on track 018° to ACT VORTAC and hold.

AWOS-3PT 135,525	WACO APP CON * 127.65 352.0	GCO 121.725	UNICOM 122.8 (CTAF) 📻
----------------------------	---------------------------------------	-----------------------	--



ELEV 592	TDZE 580
----------	----------



CATEGORY	A	B	C	D
LPV DA	830-3/4	250 (300-3/4)		NA
LNAV/VNAV DA	830-3/4	250 (300-3/4)		NA
LNAV MDA	960-1	380 (400-1)	960-1 1/8 380 (400-1 1/8)	NA
CIRCLING	1020-1 428 (500-1)	1060-1 468 (500-1)	1060-1 1/2 468 (500-1 1/2)	NA

SC-3, 25 FEB 2021 to 25 MAR 2021

SC-3, 25 FEB 2021 to 25 MAR 2021