

(WENDY3.WENDY) 17341

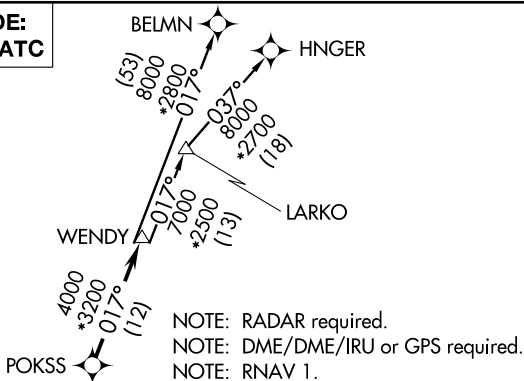
AL-739 (FAA)

WILEY POST (PWA)
OKLAHOMA CITY, OKLAHOMA

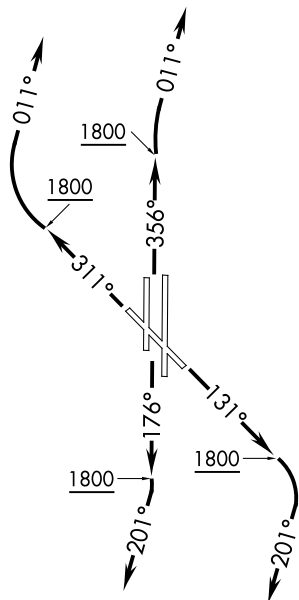
WENDY THREE DEPARTURE (RNAV)

ATIS
128.725
GND CON
121.7
WILEY POST TOWER ★
126.9 306.9
OKE CITY DEP CON
124.6 266.8

**TOP ALTITUDE:
ASSIGNED BY ATC**



TAKEOFF MINIMUMS
Rwys 13, 17R, 31, 35L/R: Standard with
minimum climb of 500' per NM to 2100.



NOTE: Chart not to scale.

DEPARTURE ROUTE DESCRIPTION

TAKEOFF RWY 13: Climb heading 131° to 1800, then right turn heading 201° or as assigned by ATC, expect RADAR vectors to POKSS, thence . . .

TAKEOFF RWYS 17L/R: Climb heading 176° to 1800, then right turn heading 201° or as assigned by ATC, expect RADAR vectors to POKSS, thence . . .

TAKEOFF RWY 31: Climb heading 311° to 1800, then right turn heading 011° or as assigned by ATC, expect RADAR vectors to POKSS, thence . . .

TAKEOFF RWYS 35L: Climb heading 356° to 1800, then heading 011° or as assigned by ATC, expect RADAR vectors to POKSS, thence . . .

TAKEOFF RWYS 35R: Climb heading 356° to 1800, then right turn heading 011° or as assigned by ATC, expect RADAR vectors to POKSS, thence . . .

. . . on track 017° to WENDY, then on (transition). Maintain 3000 or as assigned by ATC. Expect filed altitude 10 minutes after departure.

BELMN TRANSITION (WENDY3.BELMN)
HNGER TRANSITION (WENDY3.HNGER)
LARKO TRANSITION (WENDY3.LARKO)

WENDY THREE DEPARTURE (RNAV)
(WENDY3.WENDY) 07DEC17

OKLAHOMA CITY, OKLAHOMA
WILEY POST (PWA)

SC-1, 25 FEB 2021 to 25 MAR 2021

SC-1, 25 FEB 2021 to 25 MAR 2021