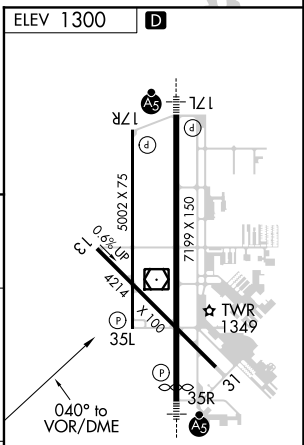
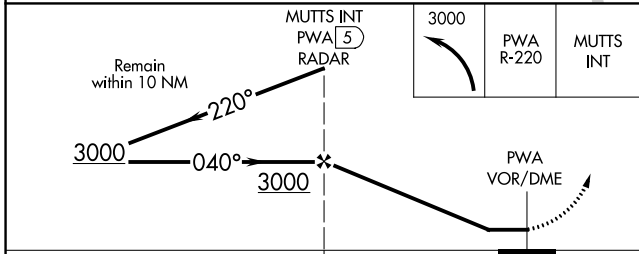
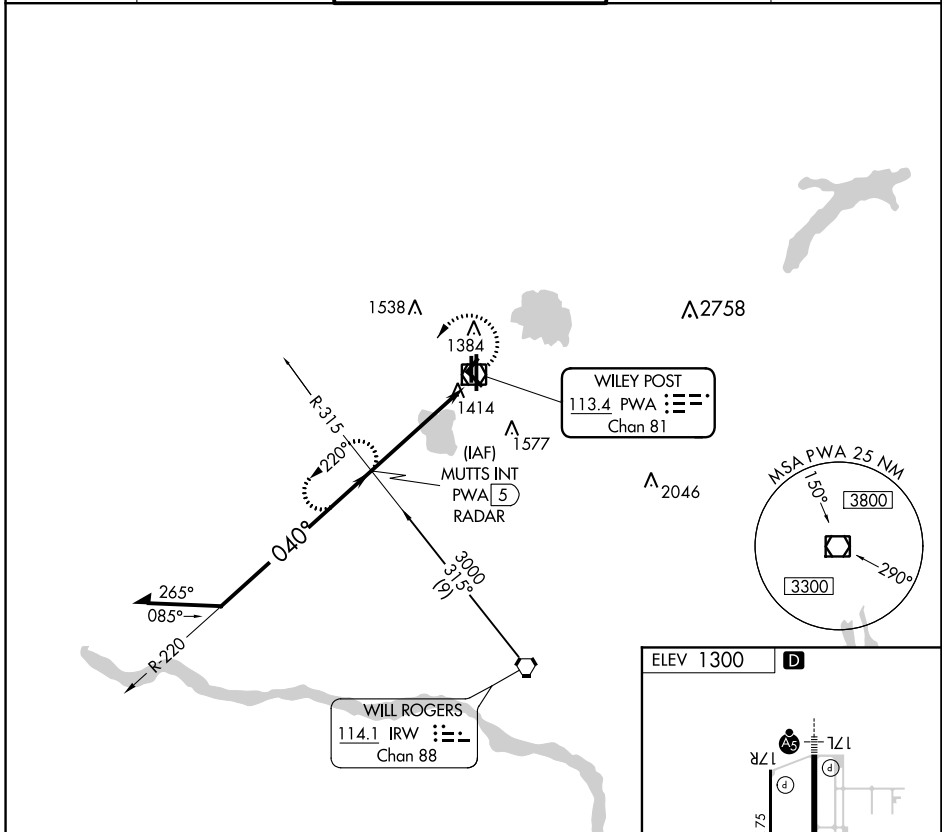


VOR/DME PWA 113.4 Chan 81	APP CRS 040°	Rwy Idg TDZE Apt Elev N/A N/A 1300
---	------------------------	--

VOR-A
WILEY POST (PWA)

ASR MISSED APPROACH: Climbing left turn to 3000 via PWA VOR/DME R-220 to MUTTS Int and hold.

ATIS 128.725	OKE CITY APP CON 124.6 266.8	WILEY POST TOWER ★ 126.9 (CTAF) 306.9	GND CON 121.7	UNICOM 122.95
------------------------	--	---	-------------------------	-------------------------



CATEGORY	A	B	C	D
C CIRCLING	1780-1	480 (500-1)	1880-1½ 580 (600-1½)	1880-2 580 (600-2)

REIL Rwy 17R and 35L
MRL Rwy 13-31 and 17R-35L
HIRL Rwy 17L-35R

SC-1, 25 FEB 2021 to 25 MAR 2021

SC-1, 25 FEB 2021 to 25 MAR 2021