

WAAS CH 42716 W35A	APP CRS 355°	Rwy Idg TDZE 1299 Apt Elev 1300
---------------------------------	------------------------	---

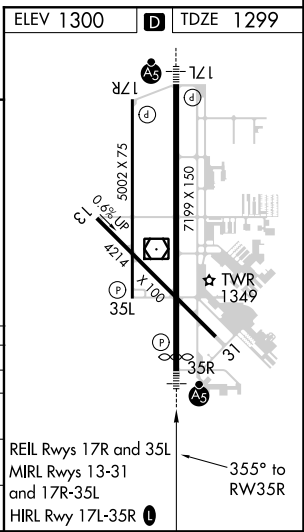
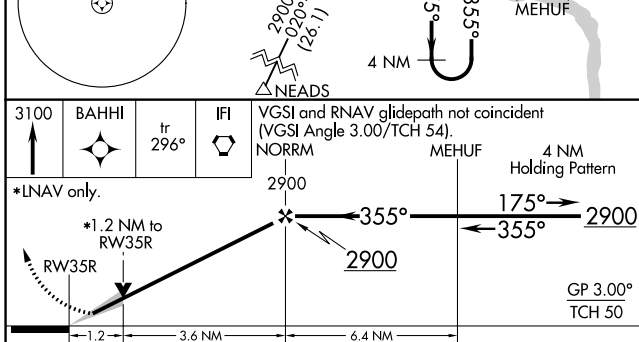
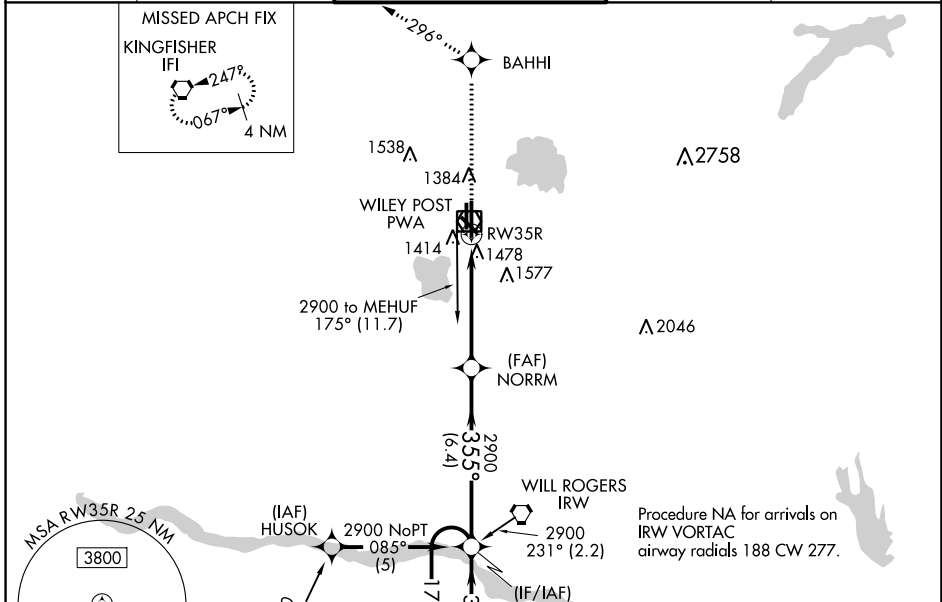
RNAV (GPS) RWY 35R

WILEY POST (PWA)

Baro-VNAV NA when using Will Rogers World altimeter setting. For uncompensated Baro-VNAV systems, LNAV/VNAV NA below -17°C (2°F) or above 46°C (114°F).
DME/DME RNP-0.3 NA. When local altimeter setting not received, use Will Rogers World altimeter setting and increase all DA 21 feet and all MDA 40 feet. VDP NA with Will Rogers World altimeter setting.

MALSR
 MISSED APPROACH: Climb to 3100 direct BAHHI and on track 296° to IFI VORTAC and hold.

ATIS 128.725	OKE CITY APP CON 124.6 266.8	WILEY POST TOWER ★ 126.9(CTAF) 306.9	GND CON 121.7	UNICOM 122.95
------------------------	--	--	-------------------------	-------------------------



CATEGORY	A	B	C	D
LPV DA	1499-1/2		200 (200-1/2)	
LNAV/VNAV DA	1769-1/4		470 (500-1/4)	
LNAV MDA	1740-1/2	441 (500-1/2)	1740-3/4	1740-1
			441 (500-3/4)	441 (500-1)
C CIRCLING	1780-1	480 (500-1)	1880-1/2	1880-2
			580 (600-1/2)	580 (600-2)

REIL Rwy 17R and 35L
 MIRL Rwy 13-31
 and 17R-35L
 HIRL Rwy 17L-35R

SC-1, 25 FEB 2021 to 25 MAR 2021

SC-1, 25 FEB 2021 to 25 MAR 2021