

APP CRS	Rwy Idg	5002
175°	TDZE	1283
	Apt Elev	1300

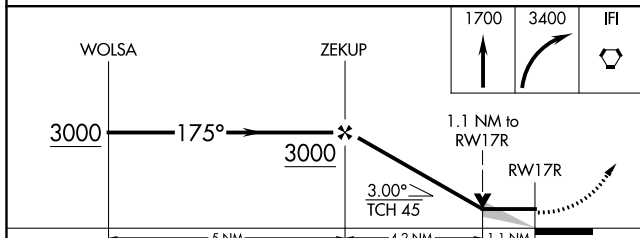
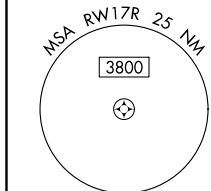
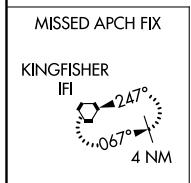
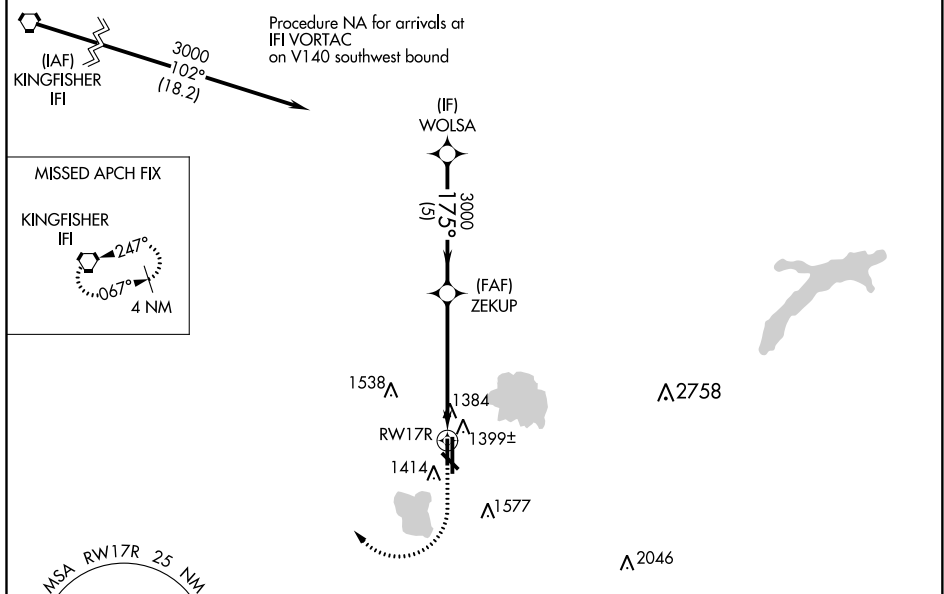
RNAV (GPS) RWY 17R

WILEY POST (PWA)

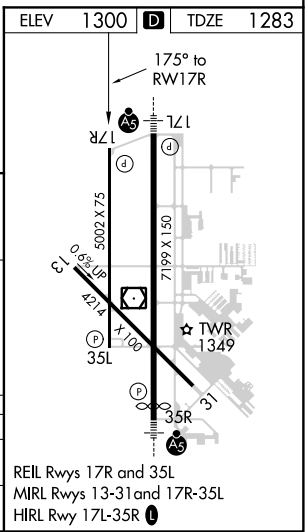
⚠ DME/DME RNP-0.3 NA, VDP NA when using Will Rogers World altimeter setting.
⚠ When local altimeter setting not received, use Will Rogers World altimeter setting and increase all MDA 40 feet: increase LNAV Cat C/D visibility 1/8 mile, Circling Cat C 1/4 mile.
ASR

MISSED APPROACH: Climb to 1700 then climbing right turn to 3400 direct IFI VORTAC and hold.

ATIS 128.725	OKE CITY APP CON 124.6 266.8	WILEY POST TOWER ★ 126.9 (CTAF) 306.9	GND CON 121.7	UNICOM 122.95
------------------------	--	--	-------------------------	-------------------------



CATEGORY	A	B	C	D
LNAV MDA	1660-1 377 (400-1)			
C CIRCLING	1780-1	480 (500-1)	1880-1½ 580 (600-1½)	1880-2 580 (600-2)



SC-1, 25 FEB 2021 to 25 MAR 2021

SC-1, 25 FEB 2021 to 25 MAR 2021