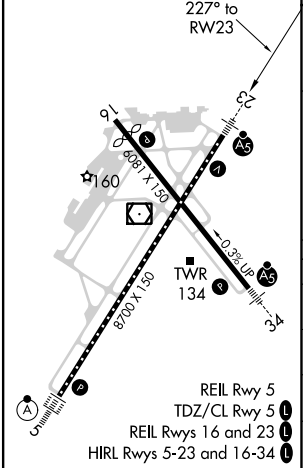
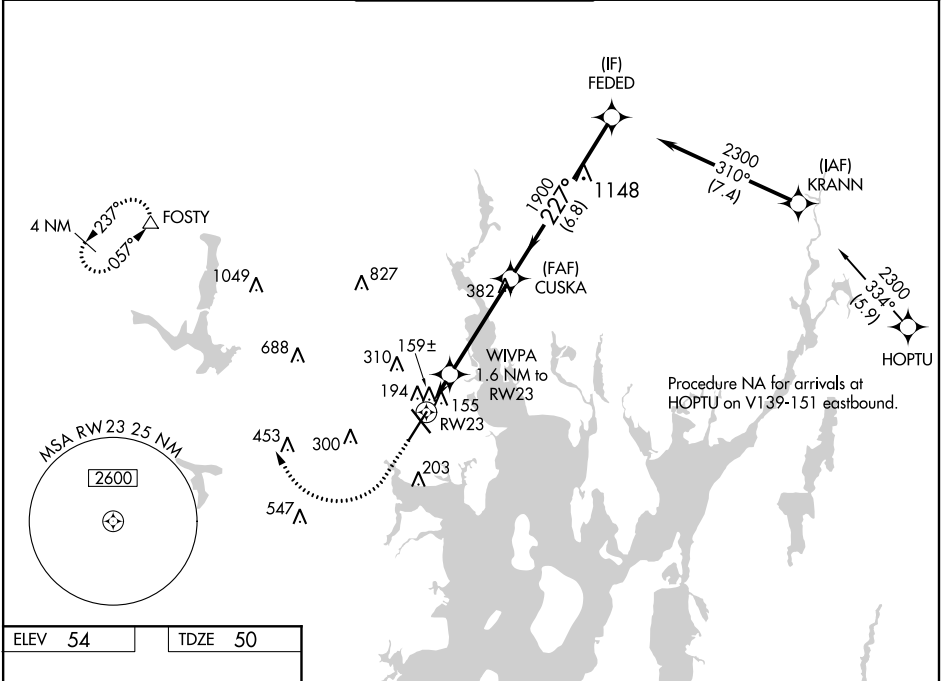


WAAS CH 93823 W23A	APP CRS 227°	Rwy Idg TDZE Apt Elev	8700 50 54
--	------------------------	-----------------------------	---------------------------------------

RNAV (GPS) Y RWY 23

THEODORE FRANCIS GREEN STATE (PVD)

RNP APCH.		MALSR	MISSED APPROACH: Climb to 1700 then climbing right turn to 2500 direct FOSTY and hold.	
<p>▼ For uncompensated Baro-VNAV systems, procedure NA below -17°C or above 54°C. For inop ALS, increase LNAV Cats C/D visibility to RVR 6000. ** RVR 1800 authorized with use of FD or AP or HUD to DA.</p>				
D-ATIS 124.2	PROVIDENCE APP CON * 123.675 244.875	PROVIDENCE TOWER * 120.7 (CTAF) 0 257.8	GND CON 121.9 348.6	CLNC DEL 126.65 348.6



ELEV 54	TDZE 50	<p>1700 2500 FOSTY VGSi and RNAV glidepath not coincident (VGSi Angle 3.00°/TCH 41).</p>			
<p>*LNAV only</p>		<p>WIVPA 1.6 NM to RW23</p>			
<p>RW23</p>		<p>*1 NM to RW23</p>			
<p>1700</p>		<p>1900</p>			
<p>2500</p>		<p>2300</p>			
<p>FOSTY</p>		<p>FEDED</p>			
<p>GP 3.00° TCH 51</p>		<p>1900</p>			
CATEGORY	A	B	C	D	
LPV DA **	250/24		200 (200-½)		
LNAV/VNAV DA	346/24		296 (300-½)		
LNAV MDA	460/24	410 (500-½)	460/40	410 (500-¾)	
CIRCLING	560-1	640-1	640-1½	860-2½	
	506 (600-1)	586 (600-1)	586 (600-1½)	806 (900-2½)	

NE-1, 25 FEB 2021 to 25 MAR 2021

NE-1, 25 FEB 2021 to 25 MAR 2021