

LOC/DME I-PVD <b>109.3</b> Chan 30	APP CRS <b>047°</b>	Rwy Idg <b>8700</b> TDZE <b>53</b> Apt Elev <b>54</b>
--	------------------------	---

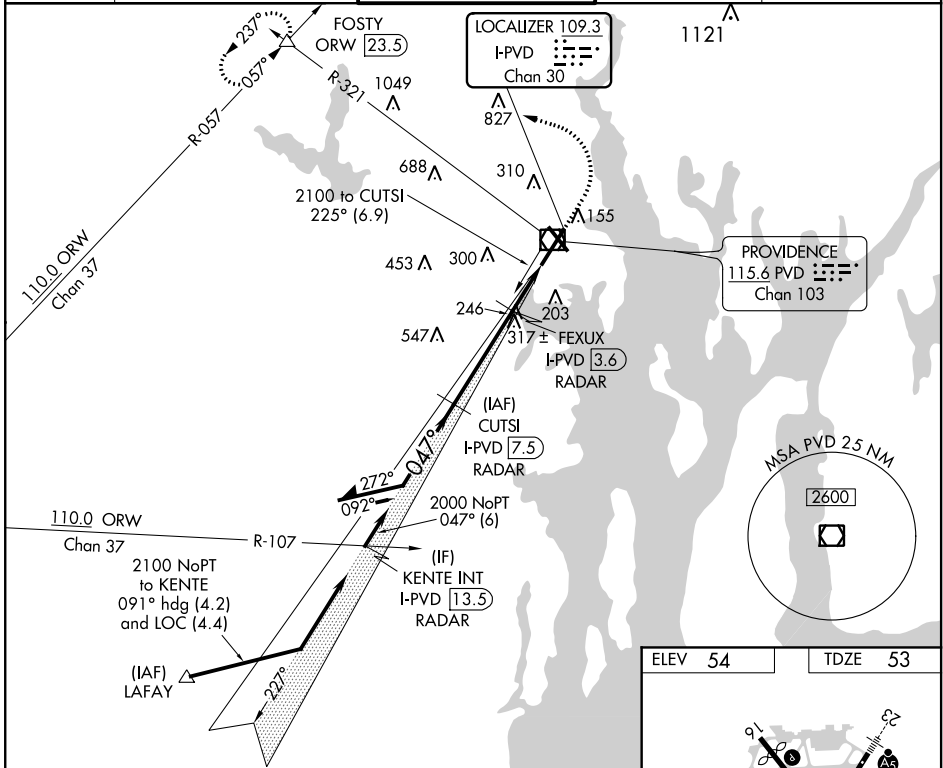
# ILS or LOC RWY 5

THEODORE FRANCIS GREEN STATE (PVD)

▼ When tower closed: increase S-ILS 5 all Cats and S-LOC 5 Cats A and B visibilities to ¾ SM, and S-LOC 5 Cats C and D visibility to 1 SM.  
 ▲ When control tower closed, for inop ALS, increase S-LOC 5 Cats C and D visibility to 1 ½ SM. RADAR or DME required for localizer minimums.

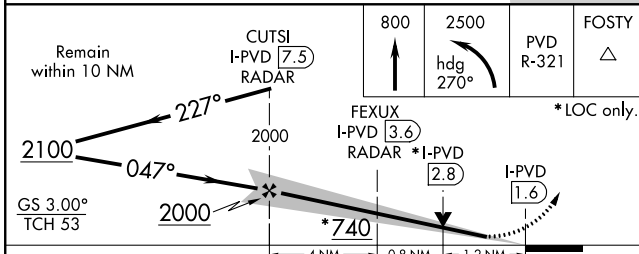
ALSF-2 MISSED APPROACH: Climb to 800 then climbing left turn to 2500 on heading 270° and PVD VOR/DME R-321 to FOSTY INT/ORW 23.5 DME and hold.

D-ATIS <b>124.2</b>	PROVIDENCE APP CON ★ <b>123.675 244.875</b>	PROVIDENCE TOWER ★ <b>120.7 (CTAF) 257.8</b>	GND CON <b>121.9 348.6</b>	CLNC DEL <b>126.65 348.6</b>
------------------------	--	---	-------------------------------	---------------------------------



NE-1, 25 FEB 2021 to 25 MAR 2021

NE-1, 25 FEB 2021 to 25 MAR 2021



CATEGORY	A	B	C	D
S-ILS 5	253/18		200 (200-½)	
S-LOC 5	500/24	447 (500-½)	500/45	447 (500-¾)
CIRCLING	560-1 506 (600-1)	640-1 586 (600-1)	640-1½ 586 (600-1½)	860-2½ 806 (900-2½)

ELEV 54	TDZE 53
---------	---------

Inset diagram details: Runway 5 (047°), Runway 16 (032°), Runway 23 (034°). TWR 134. REIL Rwy 5, TDZ/CL Rwy 5 and 23, REIL Rwys 16 and 23, HIRL Rwys 5-23 and 16-34. FAF to MAP 6 NM.

Knots	60	90	120	150	180
Min:Sec	6:00	4:00	3:00	2:24	2:00