

WAAS CH <b>40320</b> <b>W24A</b>	APP CRS <b>238°</b>	Rwy Idg TDZE Apt Elev	<b>5399</b> <b>9</b> <b>9</b>
--	------------------------	-----------------------------	-------------------------------------

# RNAV (GPS) RWY 24

HARRY P WILLIAMS MEMORIAL (PTN)

RNP APCH.

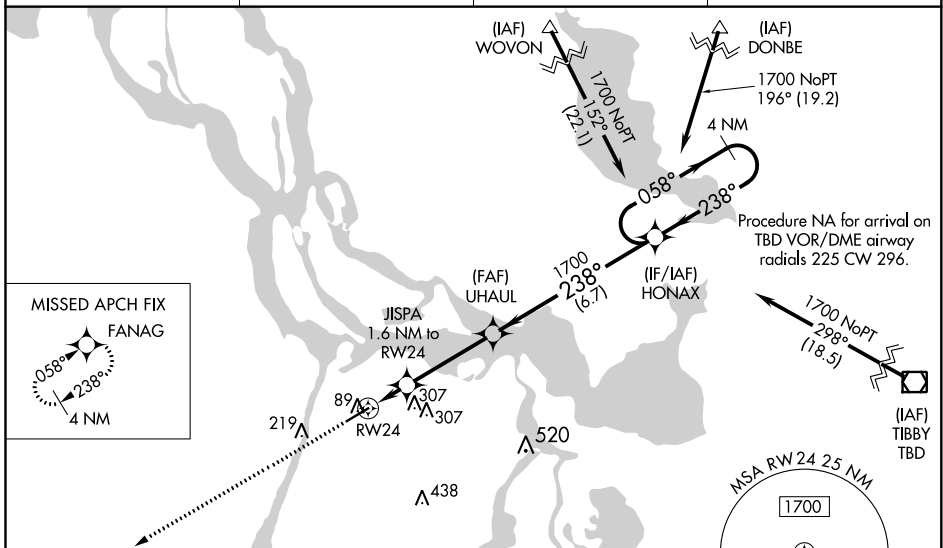
**⚠** For uncompensated Baro-VNAV systems, LNAV/VNAV NA below -15°C or above 54°C. Circling NA to Rwy 4W and 22W. Baro-VNAV and VDP NA when using New Iberia altimeter setting and increase all DA 82 feet and all MDA 100 feet; increase LNAV/VNAV all Cats visibility 1/8 mile, LNAV Cat C visibility 1/4 mile and Circling Cat C visibility 1/2 mile. For inop MALSR, increase LNAV Cat C visibility to 1 mile. For inop MALSR, when using New Iberia altimeter setting, increase LPV all Cats visibility to 7/8 mile, LNAV/VNAV all Cats visibility to 1 1/8 mile, and LNAV Cat C visibility to 1 1/8 mile. When VGSI inop, Circling Rwy 6 NA at night.

MALSR

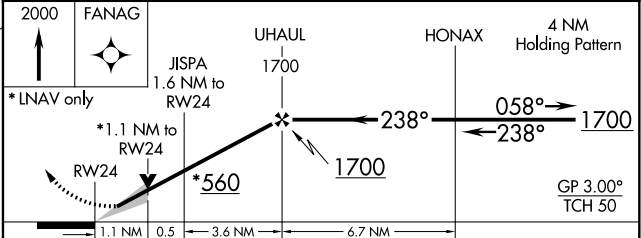
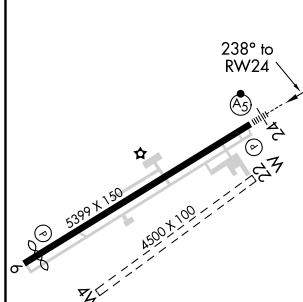


MISSED APPROACH:  
Climb to 2000 direct  
FANAG and hold.

AWOS-3PT <b>134.575</b>	NEW ORLEANS APP CON <b>124.3 350.35</b>	CLNC DEL <b>124.3</b>	UNICOM <b>122.8 (CTAF) 0</b>
----------------------------	--	--------------------------	---------------------------------



ELEV <b>9</b>	TDZE <b>9</b>
---------------	---------------



CATEGORY	A	B	C	D
LPV DA		209-1/2	200 (200-1/2)	NA
LNAV/VNAV DA		259-1/2	250 (300-1/2)	NA
LNAV MDA	400-1/2	391 (400-1/2)	400-5/8 391 (400-5/8)	NA
CIRCLING	520-1 511 (600-1)	580-1 571 (600-1)	660-1 3/4 651 (700-1 3/4)	NA

SC-4, 25 FEB 2021 to 25 MAR 2021

SC-4, 25 FEB 2021 to 25 MAR 2021