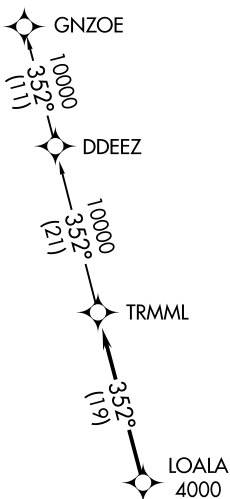


**TOP ALTITUDE:  
ASSIGNED BY ATC**



- ATIS 125.025
- CLNC DEL 118.25
- GND CON 121.9
- PONTIAC TOWER ★ 120.5 (CTAF)
- DETROIT DEP CON 132.35 284.0

TAKEOFF MINIMUMS:

Rwys 9L/R, 27L/R: Standard.  
Rwys 18, 36: NA-Environmental.



- NOTE: RNAV 1.
- NOTE: RADAR required.
- NOTE: DME/DME/IRU or GPS required.
- NOTE: Turbojet departures at/above 10000, maintain 280K until advised by ATC.

NOTE: Chart not to scale.



**DEPARTURE ROUTE DESCRIPTION**

TAKEOFF RUNWAYS 9L/R: Climb on heading 095° or as assigned for RADAR vectors to cross LOALA at or above 4000, thence....

TAKEOFF RUNWAYS 27L/R: Climb on heading 275° or as assigned for RADAR vectors to cross LOALA at or above 4000, thence....

....on track 352° to TRMML, then on (transition). Maintain ATC assigned altitude, expect filed altitude 10 minutes after departure.

GNZOE TRANSITION (TRMML3.GNZOE):