

EC-1, 25 FEB 2021 to 25 MAR 2021

DEPARTURE ROUTE DESCRIPTION

TAKEOFF RUNWAYS 9L/R: Climb on heading 095° or as assigned for RADAR vectors to cross JWELS at or above 4000, thence....

TAKEOFF RUNWAYS 27L/R: Climb on heading 275° or as assigned for RADAR vectors to cross JWELS at or above 4000, thence....

....on track 218° to SNDRS, then on (transition). Maintain ATC assigned altitude, expect filed altitude 10 minutes after departure.

BGHR T TRANSITION (SNDRS2.BGHR T):  
 TORRR TRANSITION (SNDRS2.TORRR):

NOTE: RNAV 1.

NOTE: RADAR required.

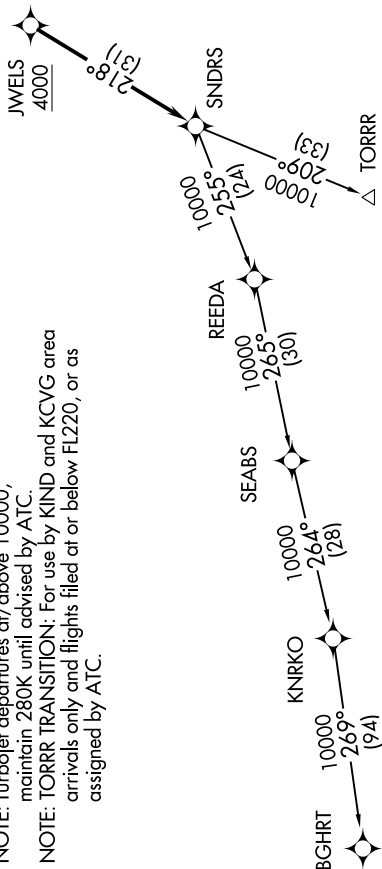
NOTE: DME/DME/IRU or GPS required.

NOTE: Turbojet departures at/above 10000, maintain 280K until advised by ATC.

NOTE: TORRR TRANSITION: For use by KIND and KCVG area arrivals only and flights filed at or below FL220, or as assigned by ATC.

TOP ALTITUDE:  
ASSIGNED BY ATC

- ATIS 125.025
- CLINC DEL 118.25
- GND CON 121.9
- PONTIAC TOWER ★ 120.5 (CTAF)
- DETROIT DEP CON 132.35 284.0



TAKEOFF MINIMUMS:

Rwys 9L/R, 27L/R: Standard.

Rwys 18, 36: NA-Environmental.

NOTE: Chart not to scale.

EC-1, 25 FEB 2021 to 25 MAR 2021