

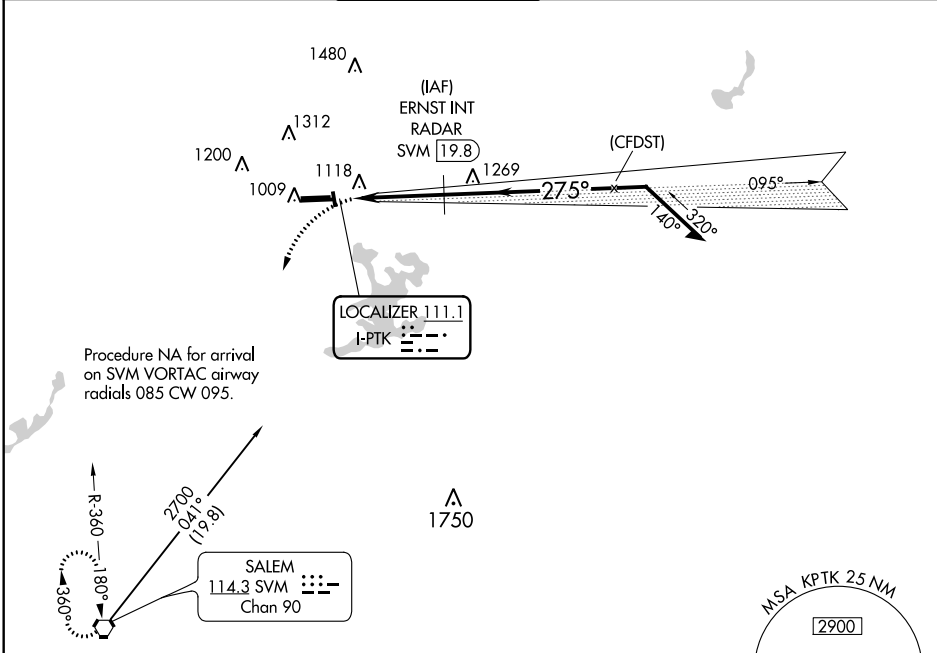
LOC I-PTK <b>111.1</b>	APP CRS <b>275°</b>	Rwy Idg <b>6520</b>
		TDZE <b>974</b>
		Apt Elev <b>981</b>

**LOC BC RWY 27L**  
OAKLAND COUNTY INTL (PTK)

**⚠** Circling Rwy 9L, 36 NA at night. When local altimeter setting not received, use Coleman A Young Muni altimeter setting and increase all MDA 120 feet, increase S-27L Cat C/D visibility 3/8 SM and Circling Cat C/D visibility 1/2 SM.

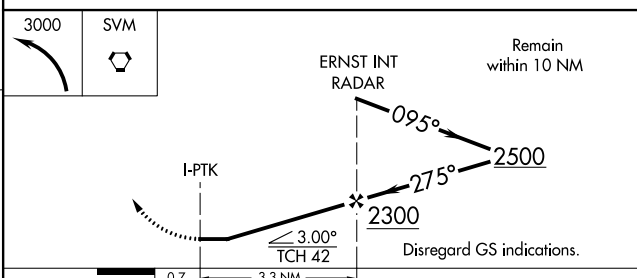
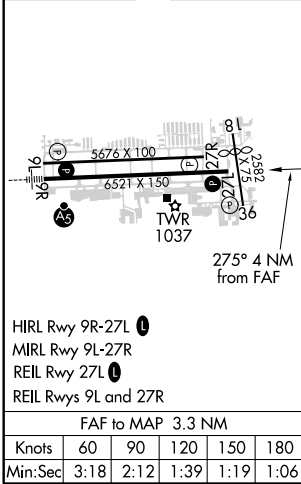
**MISSED APPROACH:**  
Climbing left turn to 3000 direct SVM VORTAC and hold.

ATIS <b>125.025</b>	DETROIT APP CON <b>132.35 284.0</b>	PONTIAC TOWER * <b>120.5 (CTAF) 0</b>	GND CON <b>121.9</b>	CLNC DEL <b>118.25</b>	UNICOM <b>122.95</b>
------------------------	--	--	-------------------------	---------------------------	-------------------------



ELEV 981	<b>D</b>	TDZE 974
----------	----------	----------

**BACK COURSE**



CATEGORY	A	B	C	D
S-LOC 27L	1440-1	466 (500-1)	1440-1 3/8	466 (500-1 3/8)
<b>C</b> CIRCLING	1500-1 519 (600-1)	1540-1 559 (600-1)	1640-1 3/4 659 (700-1 3/4)	1640-2 659 (700-2)

EC-1, 25 FEB 2021 to 25 MAR 2021

EC-1, 25 FEB 2021 to 25 MAR 2021