

| | | | |
|--|------------------------|---|-------------|
| WAAS CH 86706 W23A | APP CRS 231° | Rwy Idg TDZE 191 Apt Elev 193 | 5002 |
|--|------------------------|---|-------------|

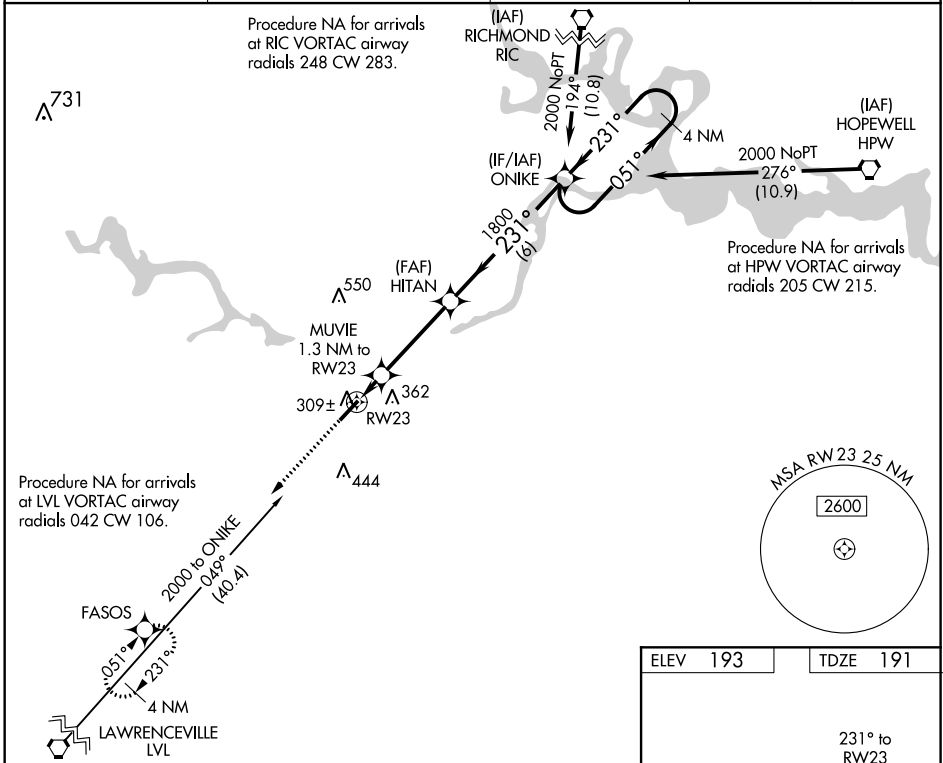
RNAV (GPS) RWY 23

DINWIDDIE COUNTY (P'TB)

⚠ Baro-VNAV NA when using Richmond Executive-Chesterfield County altimeter setting. For uncompensated Baro-VNAV systems, LNAV/VNAV NA below -15°C (5°F) or above 54°C (130°F). DME/DME RNP-0.3 NA. When local altimeter setting not received, use Richmond Executive-Chesterfield County altimeter setting: increase LPV DA to 478 feet and LNAV/VNAV DA to 517 feet and all MDA 40 feet; increase LNAV/VNAV all Cats visibility and LNAV Cat C visibility 1/8 mile, and increase Circling Cat C visibility 1/4 mile.

MISSED APPROACH:
Climb to 2000 direct FASOS and hold.

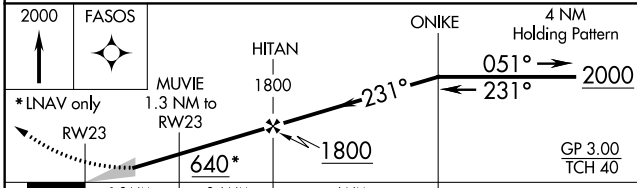
| | | | |
|--------------------------|--|-----------------------|---------------------------------|
| AWOS-3 133.325 | POTOMAC APP CON 126.75 307.2 | GCO 135.075 | UNICOM 122.7 (CTAF) 0 |
|--------------------------|--|-----------------------|---------------------------------|



NE-3, 25 FEB 2021 to 25 MAR 2021

NE-3, 25 FEB 2021 to 25 MAR 2021

| | |
|-----------------|-----------------|
| ELEV 193 | TDZE 191 |
|-----------------|-----------------|



| CATEGORY | A | B | C | D |
|-------------------|-------|-------------|------------------------|----|
| LPV DA | 441-1 | 250 (300-1) | | NA |
| LNAV/VNAV DA | 480-1 | 289 (300-1) | | NA |
| LNAV MDA | 560-1 | 369 (400-1) | | NA |
| C CIRCLING | 680-1 | 487 (500-1) | 760-1½ 567 (600-1½) | NA |

