


LOC/DME I-JLS <b>110.3</b>	APP CRS <b>051°</b>	Rwy Idg <b>5002</b>
		TDZE <b>193</b>
		Apt Elev <b>193</b>


# LOC RWY 5

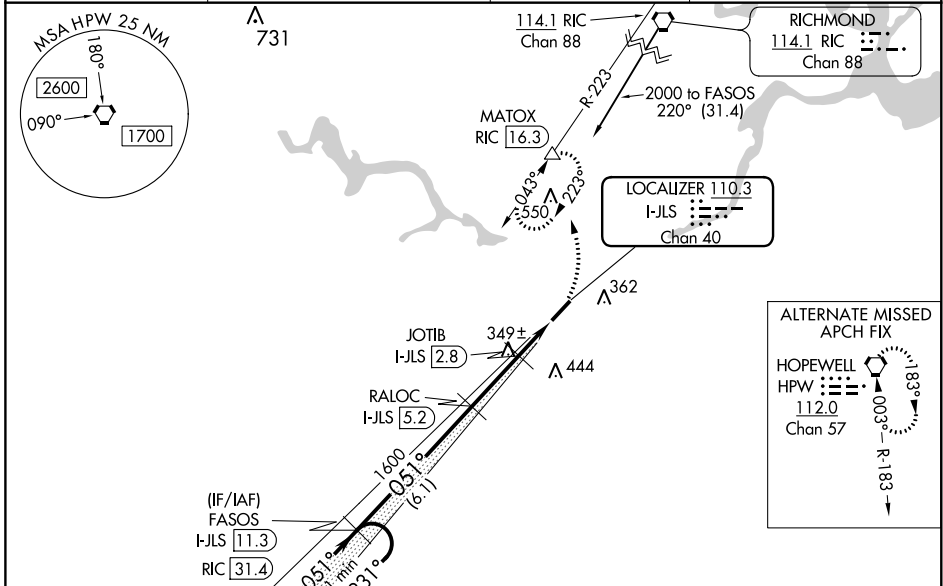
DINWIDDIE COUNTY (PTB)

**⚠** **⚠** DME required. Helicopter visibility reduction below 3/4 SM NA. VDP NA when using Richmond Executive-Chesterfield County altimeter setting. When local altimeter setting not received, use Richmond Executive-Chesterfield County altimeter setting and increase all MDA 40 feet; increase S-LOC 5 Cat C visibility 1/8 mile and Circling Cat C visibility 1/4 mile. For inop ODALS, increase S-LOC 5 Cat C visibility to 1 1/8 mile. Inop table does not apply to S-LOC 5 Cat A and B. Inop table does not apply to S-LOC Cat A and B when using Richmond Executive-Chesterfield County altimeter setting.

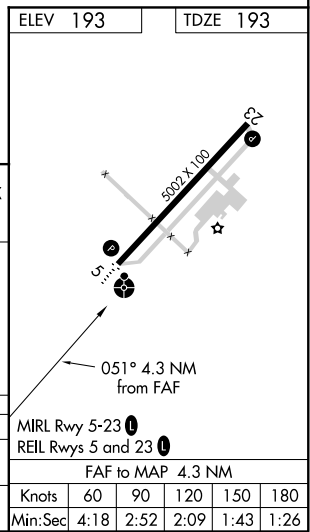
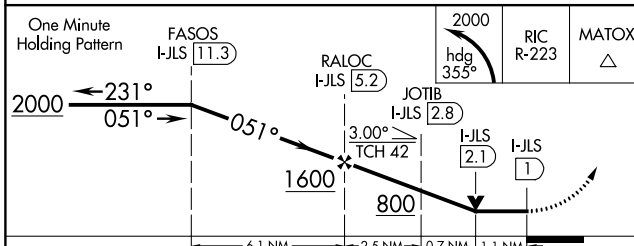
**ODALS**  ...

**MISSED APPROACH:**  
Climbing left turn to 2000 on heading 355° and on RIC VORTAC R-223 to MATOX/RIC 16.3 DME and hold.

AWOS-3 <b>133.325</b>	POTOMAC APP CON <b>126.75 307.2</b>	GCO <b>135.075</b>	UNICOM <b>122.7 (CTAF)</b> 
--------------------------	--	-----------------------	---



**DME REQUIRED**



CATEGORY	A	B	C	D
S-5	600-1 407 (500-1)			NA
<b>C</b> CIRCLING	680-1	487 (500-1)	760-1 1/2 567 (600-1 1/2)	NA

NE-3, 25 FEB 2021 to 25 MAR 2021

NE-3, 25 FEB 2021 to 25 MAR 2021