

WAAS CH 69401 W17A	APP CRS 175°	Rwy Idg TDZE 541 Apt Elev 548	6002
--	------------------------	---	-------------

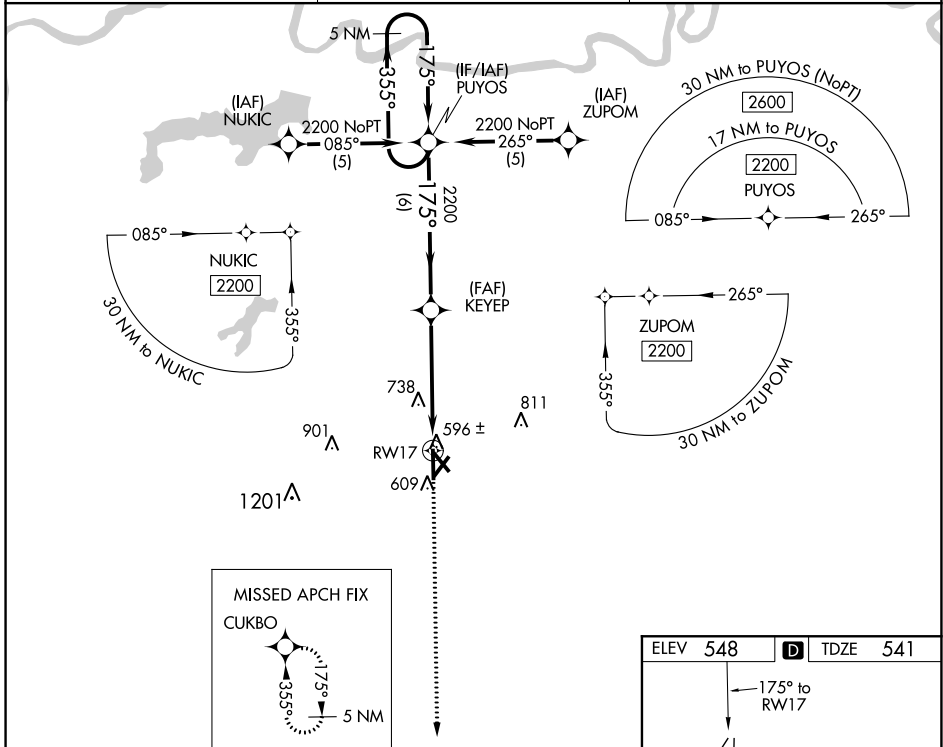
RNAV (GPS) RWY 17

COX FIELD (PR.X)

⚠ DME/DME RNP-0.3 NA. Visibility reduction by helicopters NA. If local altimeter setting not received, use Sulphur Springs altimeter setting and increase all DAs/MDAs 80 feet.
⚠ For uncompensated BARO-VNAV systems, LNAV/VNAV NA below -1.6°C (4°F) or above 47°C (118°F). BARO-VNAV NA when using Sulphur Springs altimeter setting.

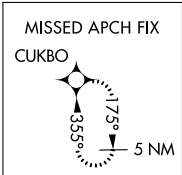
MISSED APPROACH: Climb to 2200 direct CUKBO and hold.

AWOS-3PT 119.675	FORT WORTH CENTER 124.875	UNICOM 122.975 (CTAF) 0
----------------------------	-------------------------------------	-----------------------------------



SC-2, 25 FEB 2021 to 25 MAR 2021

SC-2, 25 FEB 2021 to 25 MAR 2021



5 NM Holding Pattern		PUYOS	KEYEP	2200	CUKBO
2200 ← 355°		175° →	2200	↑	⬠
GP 3.00° TCH 40		6 NM	5 NM		
CATEGORY	A	B	C	D	
LPV DA		791-1	250 (300-1)		
LNAV/DA VNAV		846-1	305 (300-1)		
LNAV MDA	1040-1	499 (500-1)	1040-1½ 499 (500-1½)	1040-1½ 499 (500-1½)	
CIRCLING	1040-1	492 (500-1)	1040-1½ 492 (500-1½)	1100-2 552 (600-2)	

