

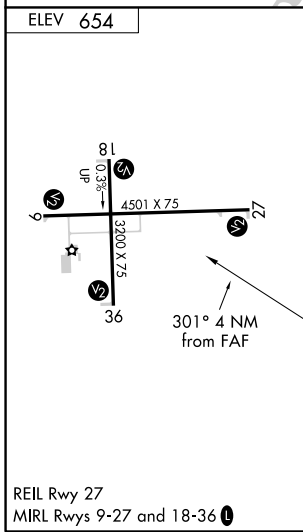
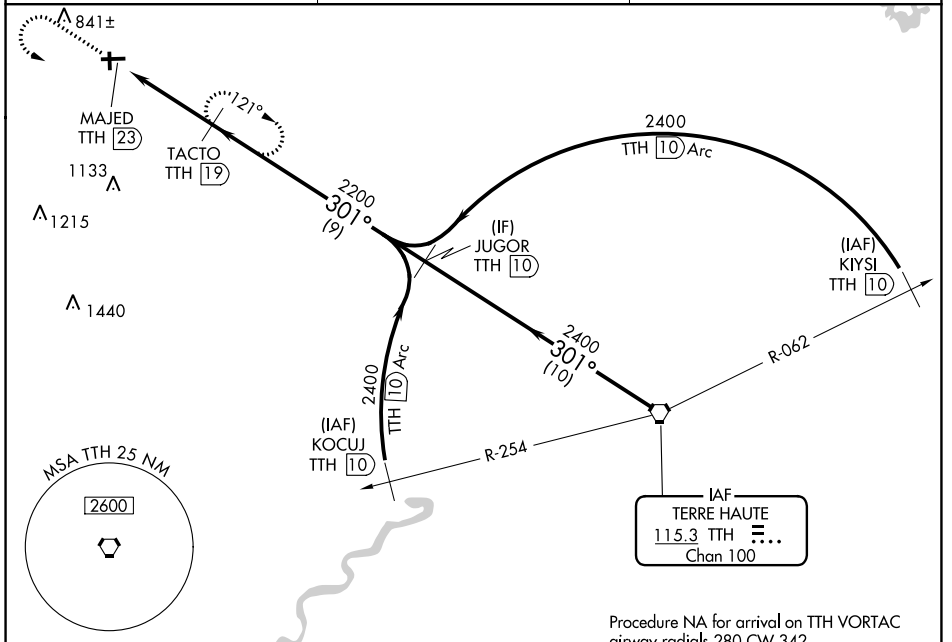
VORTAC TTH 115.3 Chan 100	APP CRS 301°	Rwy Idg TDZE Apt Elev	N/A N/A 654
---	------------------------	-----------------------------	--

VOR/DME-A
EDGAR COUNTY (PRG)

⚠ When local altimeter setting not received, use Terre Haute Rgnl altimeter setting and increase all MDA 80 feet; increase Cat C visibility ¼ mile. Visibility reduction by helicopters NA.

⚠ MISSED APPROACH: Climb to 2200 then left turn heading 080° and TTH VORTAC R-301 to TACTO/TTH 19 DME and hold.

AWOS-3 124.175	HULMAN APP CON 125.45 339.8	UNICOM 123.0 (CTAF)
--------------------------	---------------------------------------	-------------------------------



A 1549

2200	hdg 080°	TTH R-301	TACTO TTH 19	JUGOR TTH 10	TTH VORTAC
4 NM		9 NM		10 NM	
2200	301°	2400	301°	2400	Procedure Turn NA
CATEGORY	A	B	C	D	
C CIRCLING	1300-1 646 (700-1)	1300-1¼ 646 (700-1¼)	1300-1¾ 646 (700-1¾)	NA	

EC-3, 25 FEB 2021 to 25 MAR 2021

EC-3, 25 FEB 2021 to 25 MAR 2021